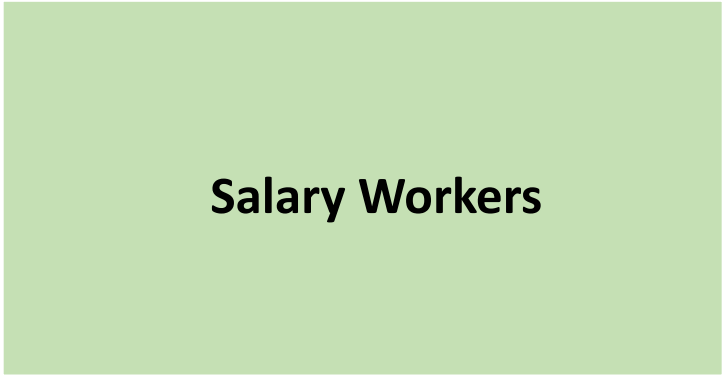


DWR Organizational Chart

Color Key



Appointed Workers



Salary Workers



Wage Workers



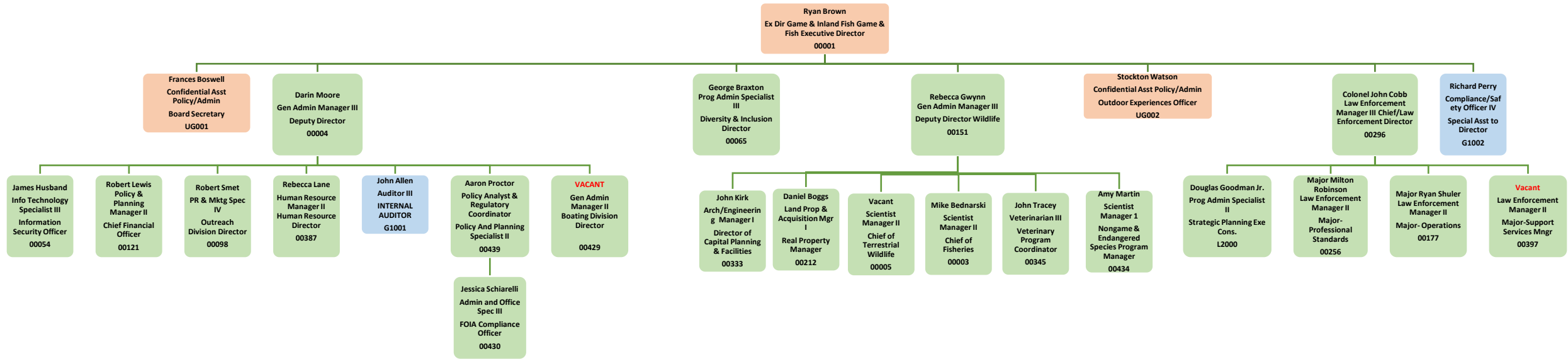
Restricted Workers

Organizational Charts

- [Executive Office & Direct Reports](#)
- [Human Resource](#)
- [Planning & Finance HQ](#)
 - [Procurement & Facilities](#)
 - [Accounting](#)
 - [IT Development](#)
 - [Warehouse / IT Operations](#)
- [Legislature & Policy Division](#)
- [Law Enforcement HQ](#)
 - [Office of Professional Standards](#)
 - [Operations Region I](#)
 - [Operations Region II](#)
 - [Operations Region III](#)
 - [Operations Region IV](#)
 - [Operations Special Ops](#)
- [Outreach Division HQ](#)
 - [Client Services](#)
 - [Recreation & Education](#)
- [Executive Office, Wildlife, Aquatics Divisions](#)
- [Wildlife Division HQ](#)
 - [Region I & IV Programs](#)
 - [Region II & III Programs](#)
 - [Lands & Access Region I](#)
 - [Lands & Access Region II](#)
 - [Lands & Access Region III](#)
 - [Lands & Access Region IV](#)
 - [Habitat Program](#)
 - [Endangered Species](#)
- [Fisheries Division HQ](#)
 - [Aquatics Regional Divisions](#)
 - [Aquatics Region I](#)
 - [Aquatics Region II](#)
 - [Aquatics Region III](#)
 - [Aquatics Region IV](#)
 - [Hatchery Units](#)
 - [King & Queen Hatchery](#)
 - [Montebello Hatchery](#)
 - [Vic Thomas Hatchery](#)
 - [Buller Hatchery](#)
 - [Marion Hatchery](#)
 - [Paint Bank Hatchery](#)
 - [Wytheville Hatchery](#)
 - [Front Royal Hatchery](#)
 - [Coursey Springs Hatchery](#)
 - [Environmental Services Section \(ESS\) / Fish and Wildlife Information Section \(FWIS\)](#)
 - [Capital Programs Unit](#)

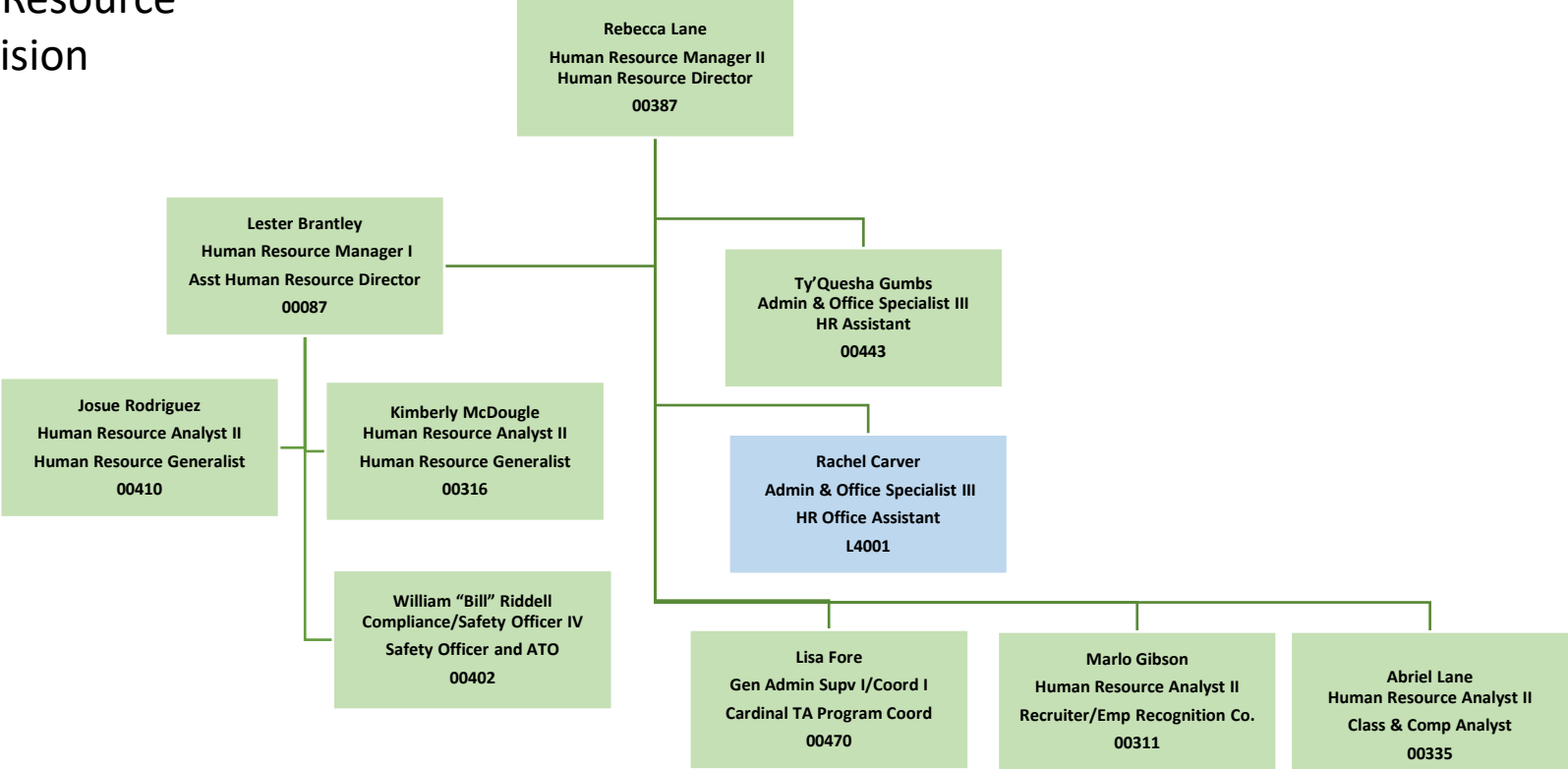
Executive Office & Direct Reports

DWR Executive Office & Direct Reports



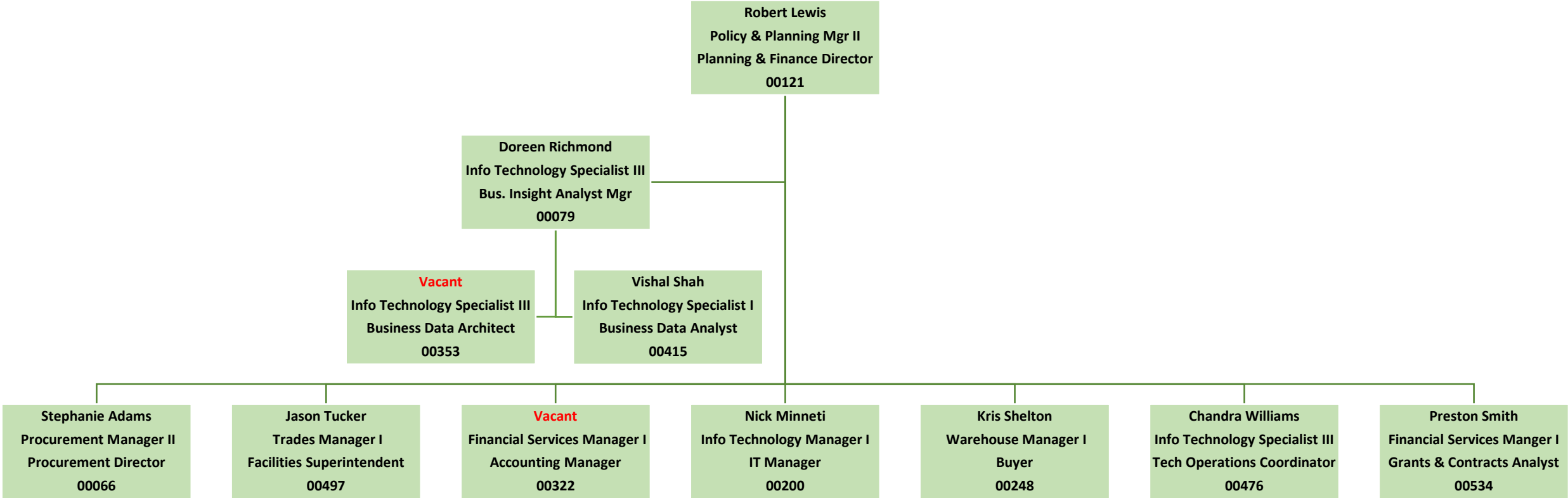
Human Resource Division

Human Resource Division

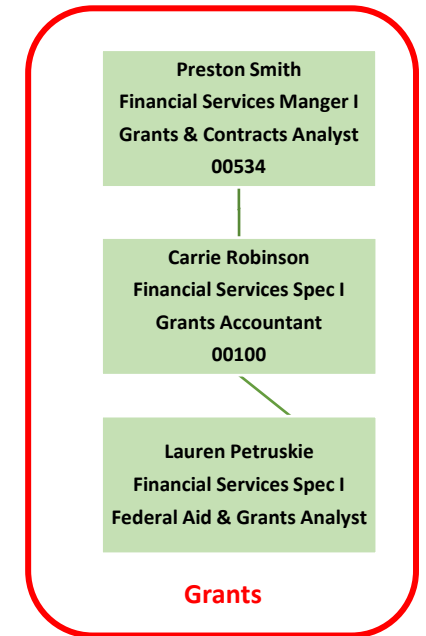
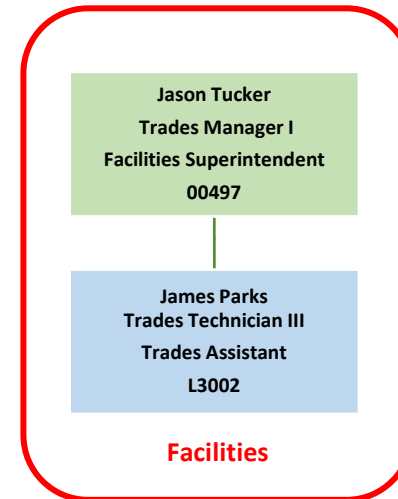
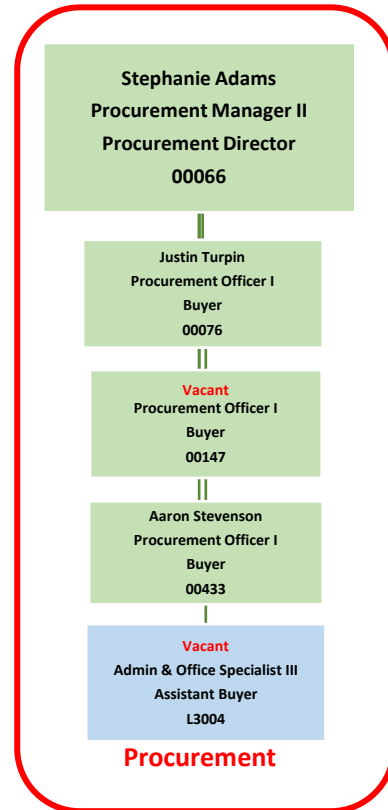


Planning & Finance Division

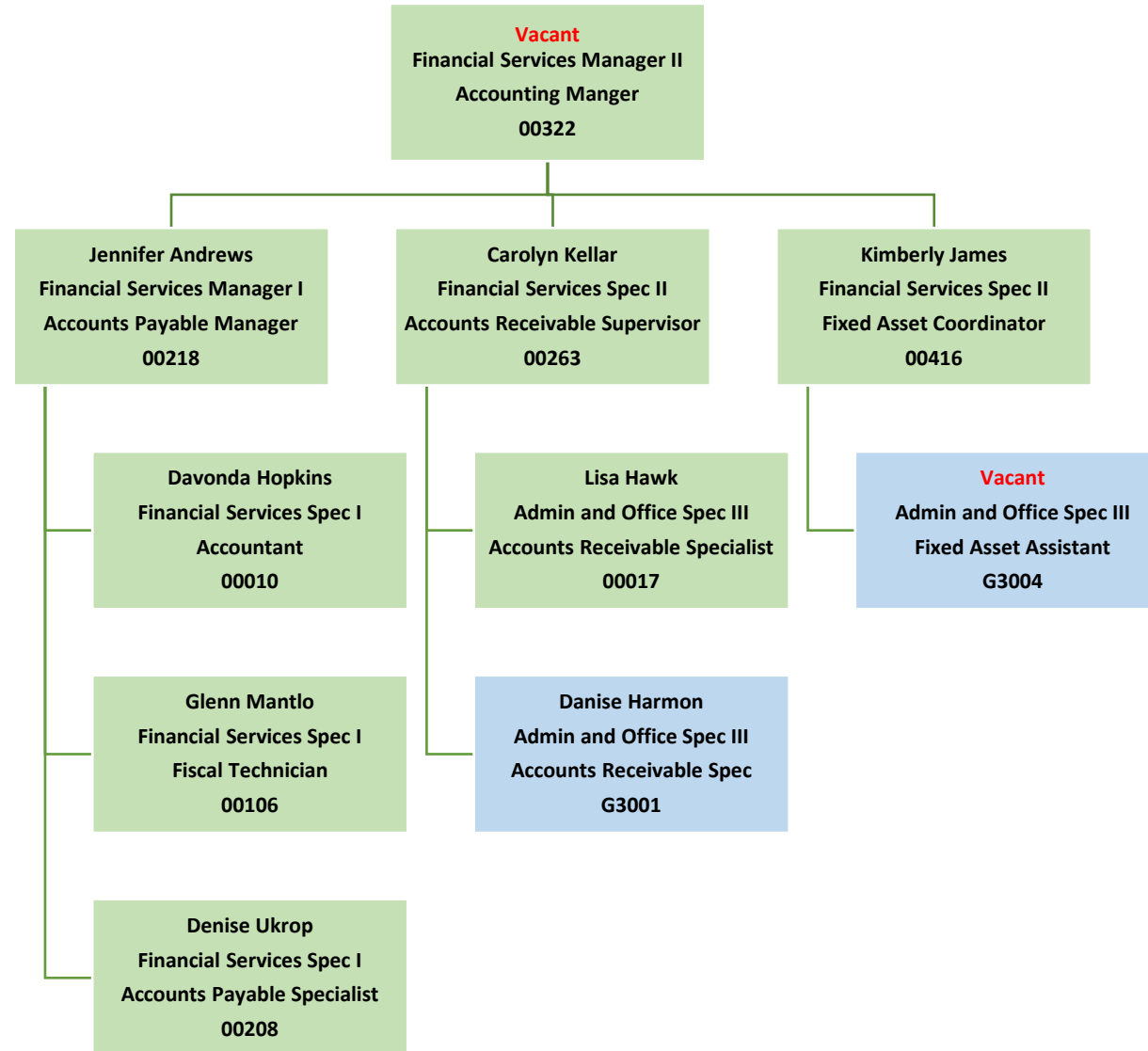
Planning & Finance Division Headquarters



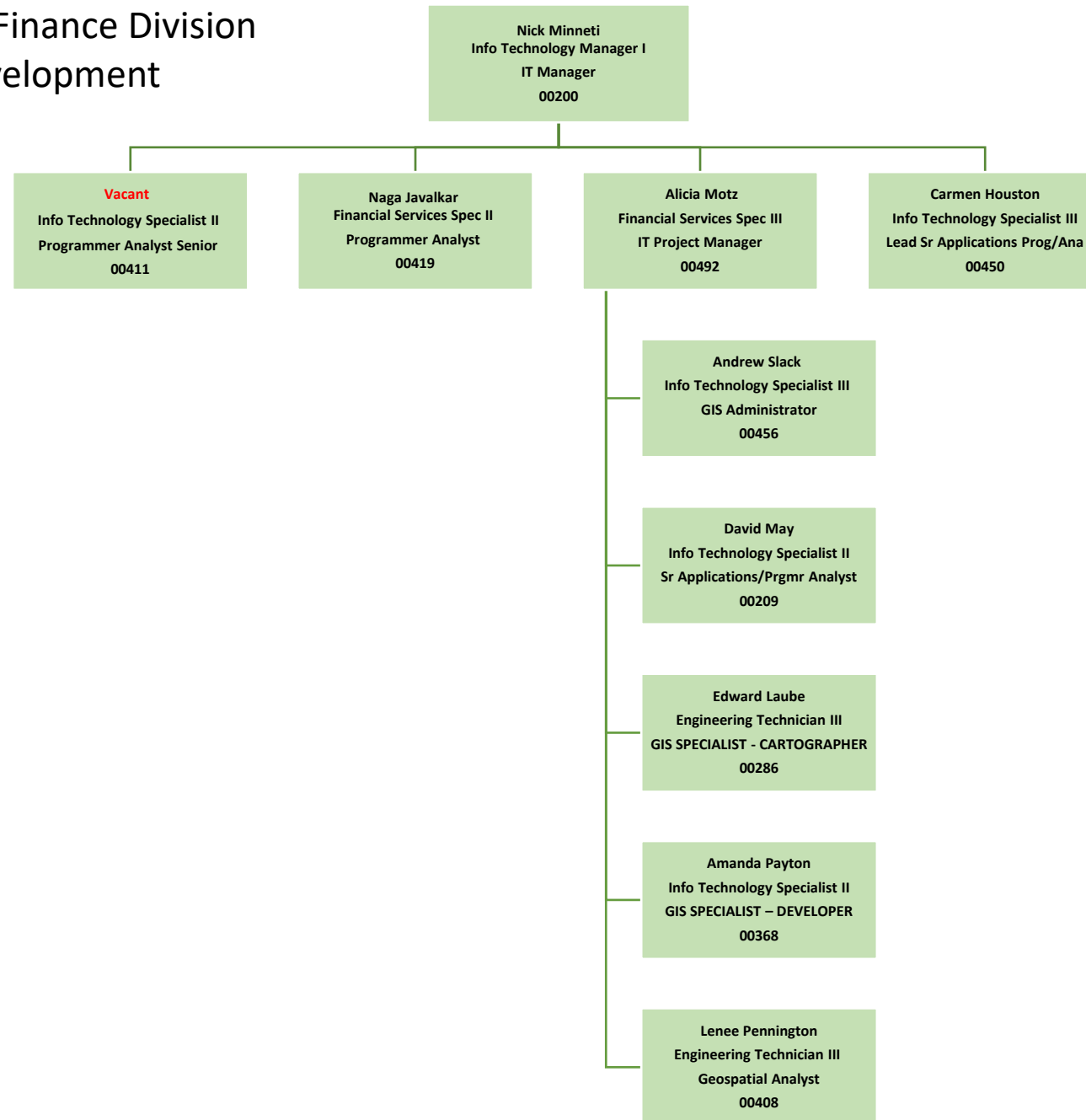
Planning & Finance Division Procurement & Facilities



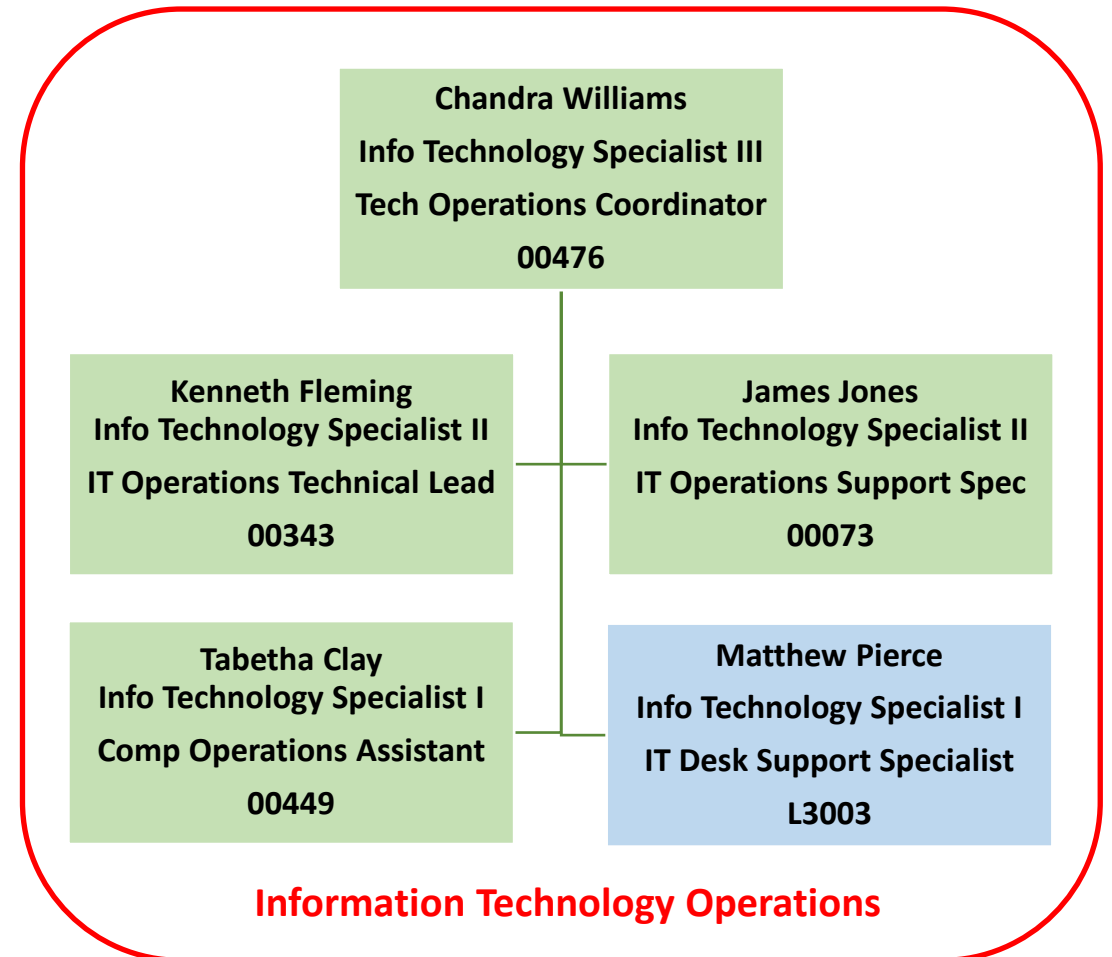
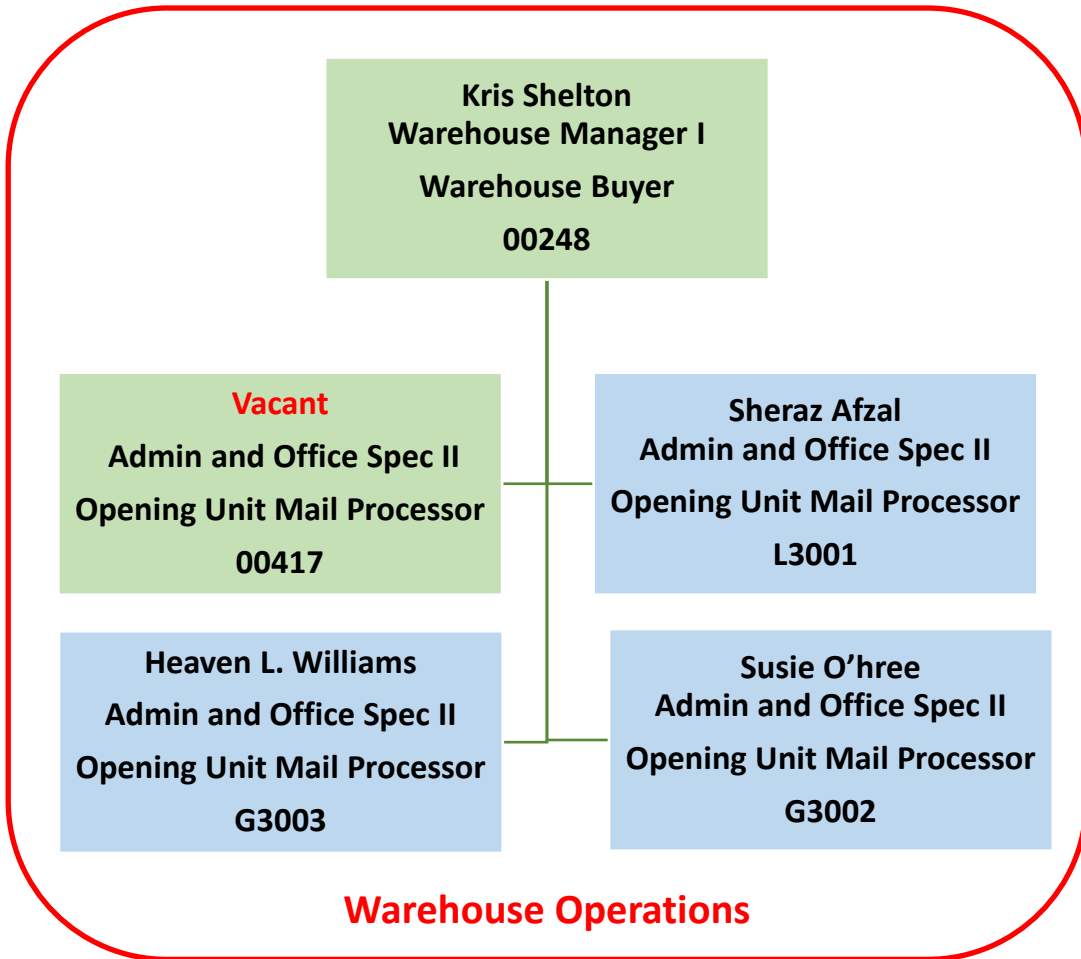
Planning & Finance Division Accounting



Planning & Finance Division IT Development

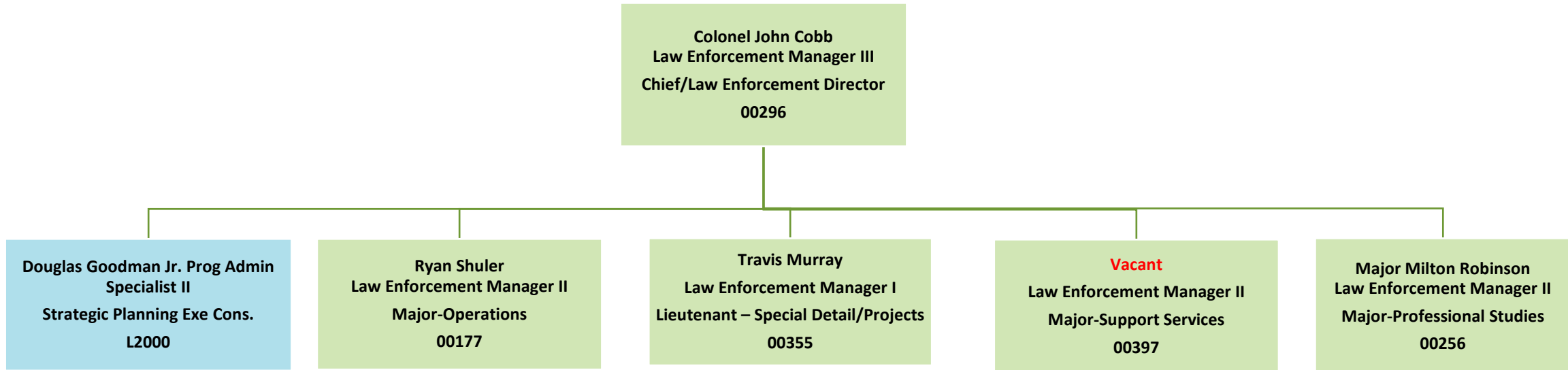


Planning & Finance Division
Warehouse / Information Technology Operations

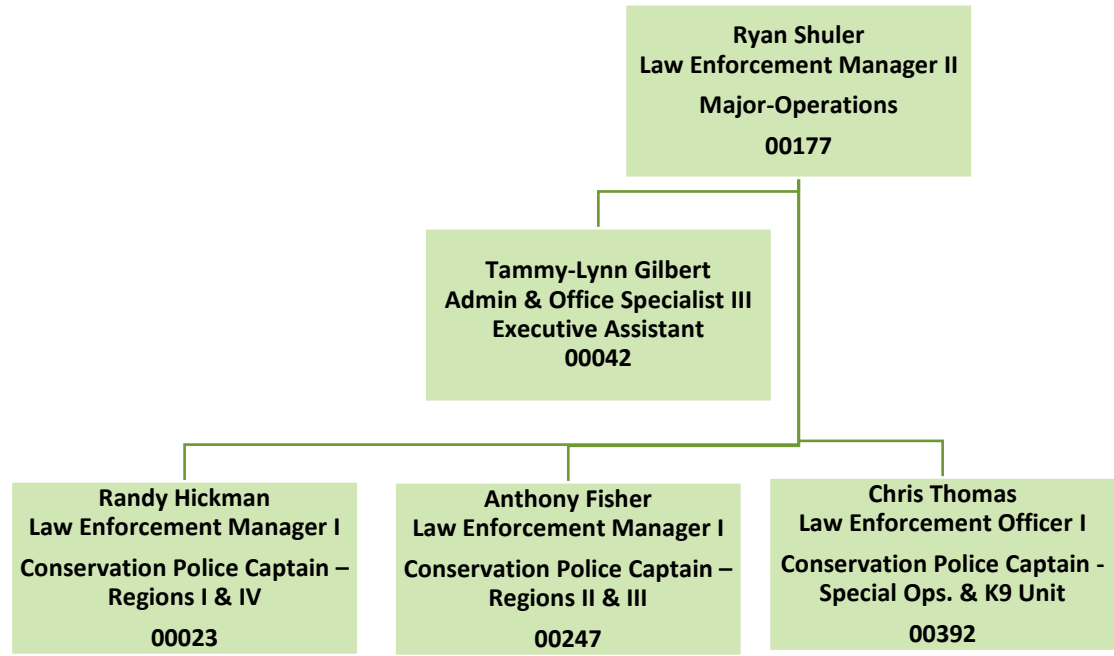


Law Enforcement Division

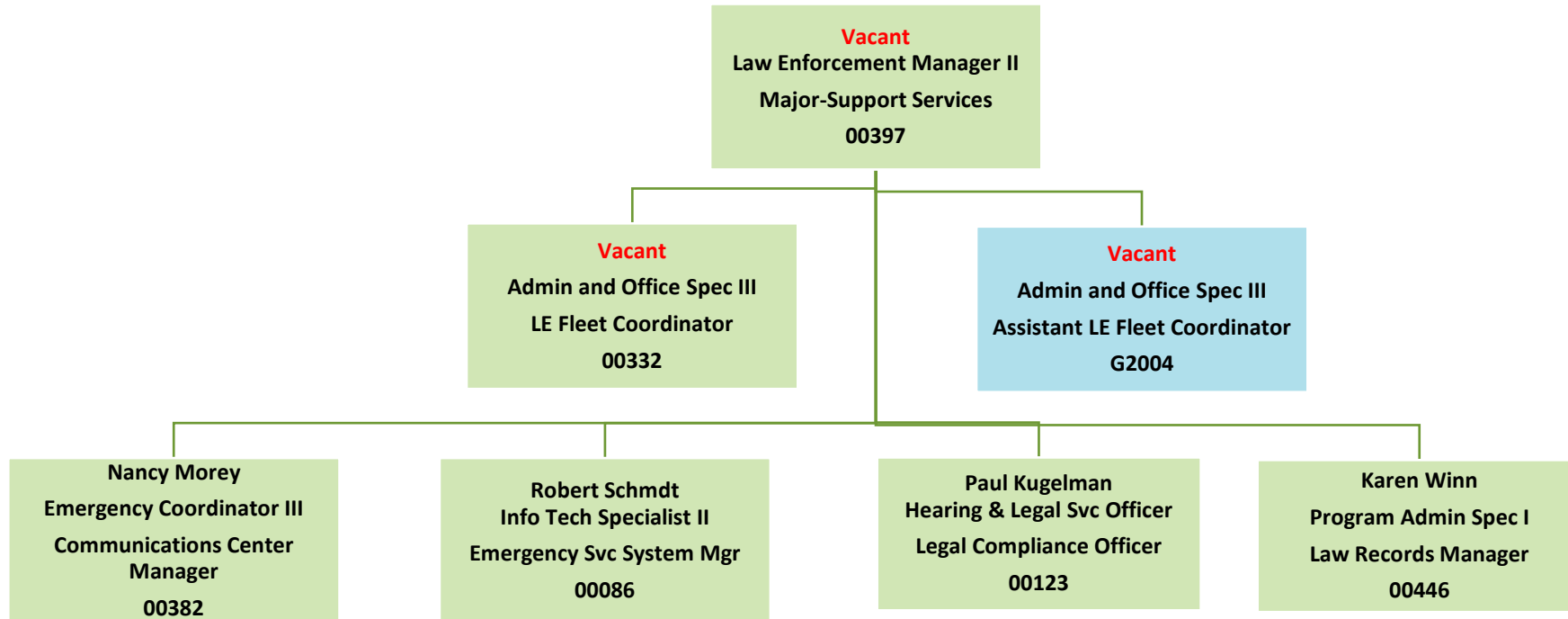
Law Enforcement Administration



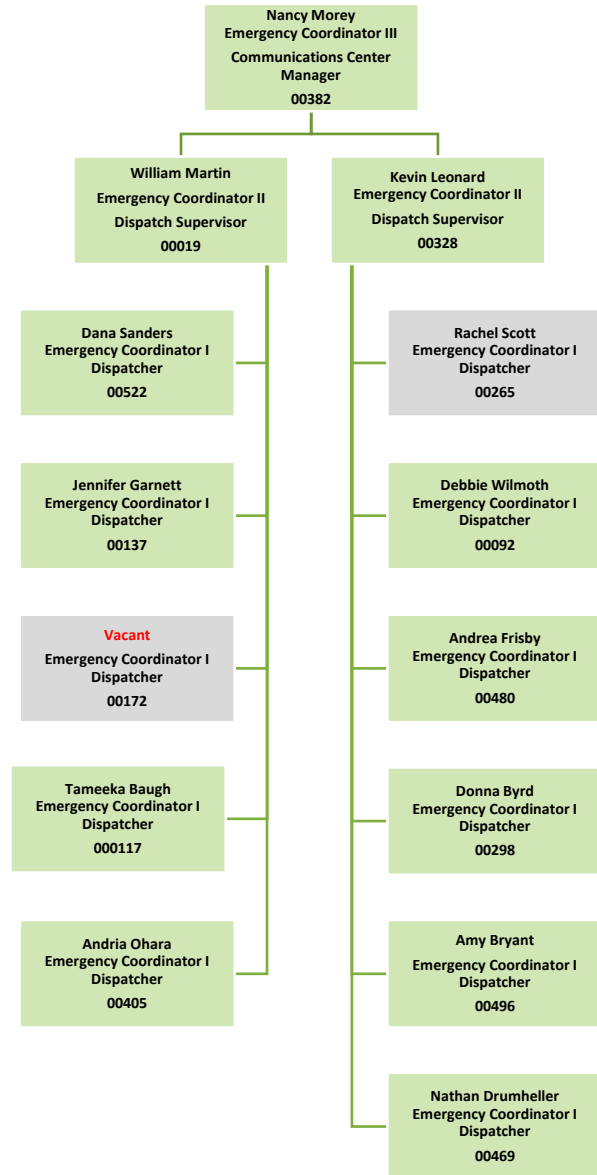
Law Enforcement Operations



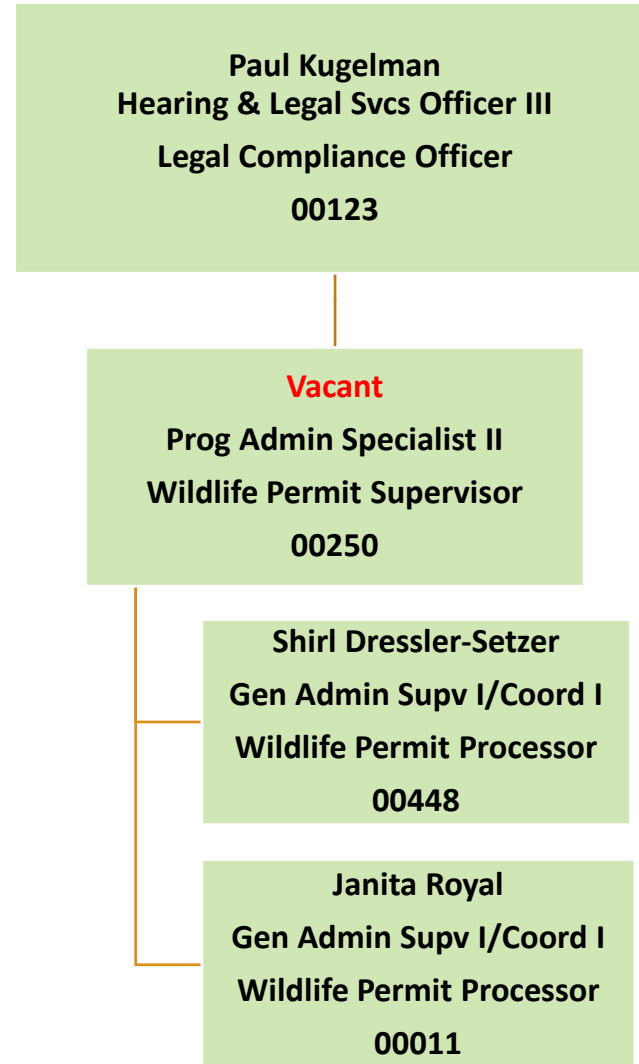
Law Enforcement Support Services



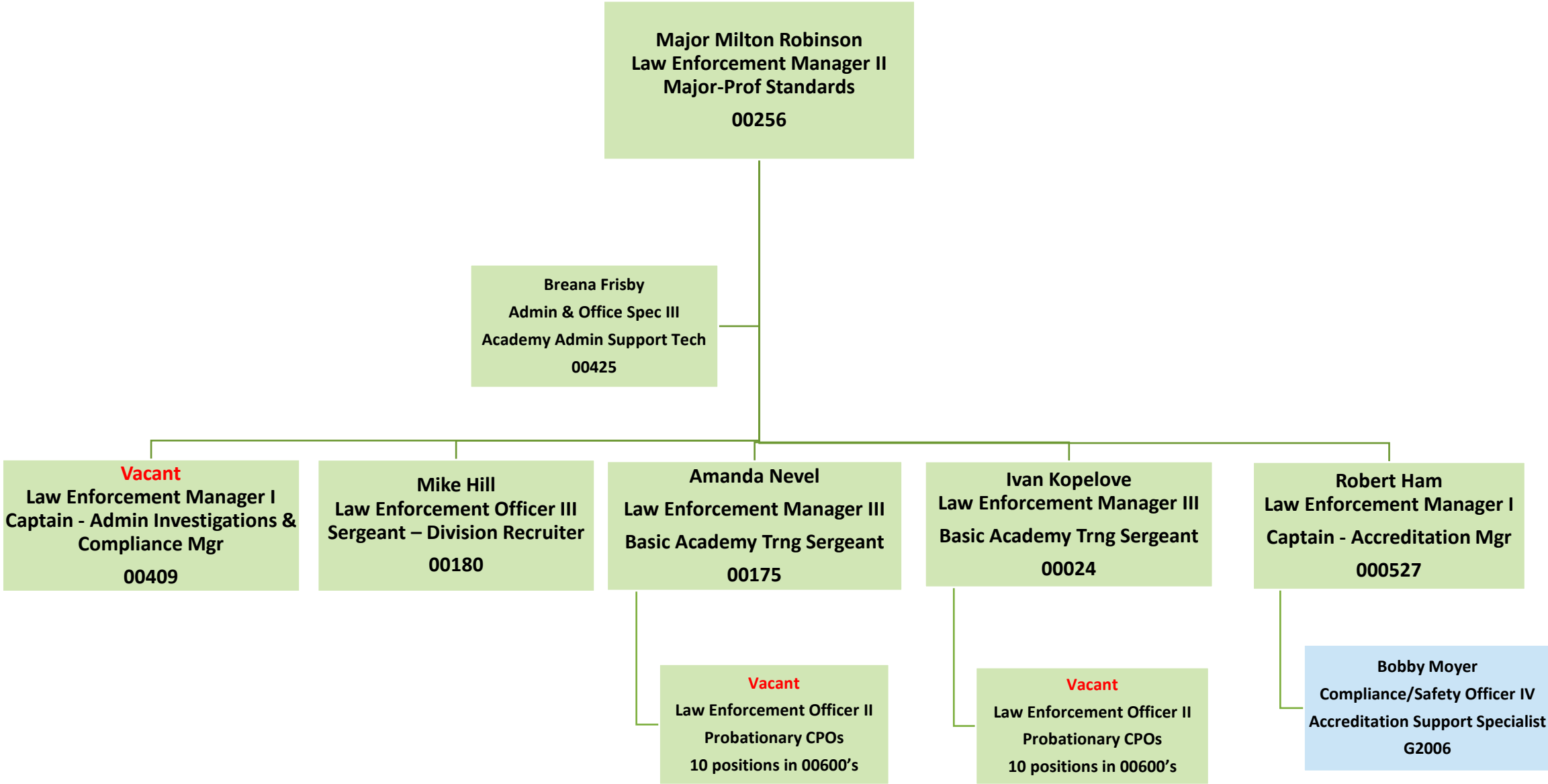
Law Enforcement Support Services – Communication Center



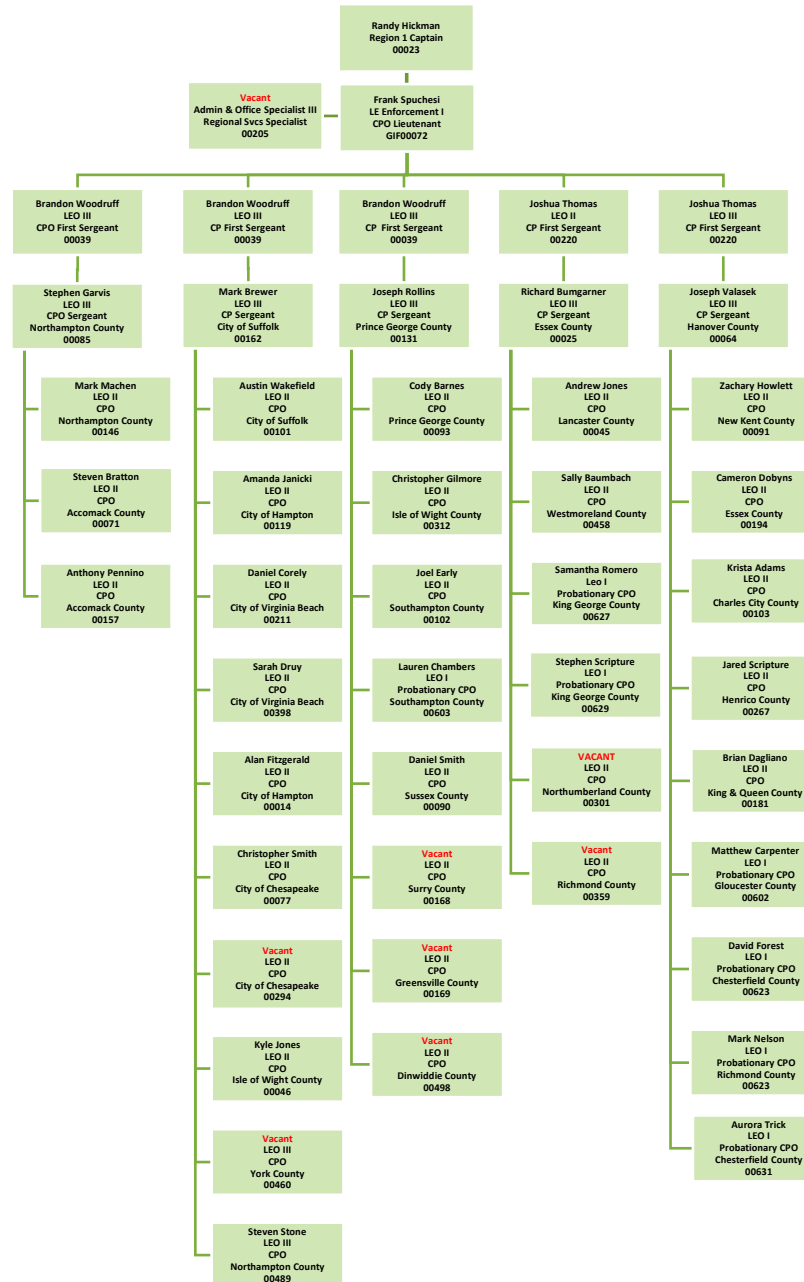
Law Enforcement Support Services -
Legislature & Policy Division



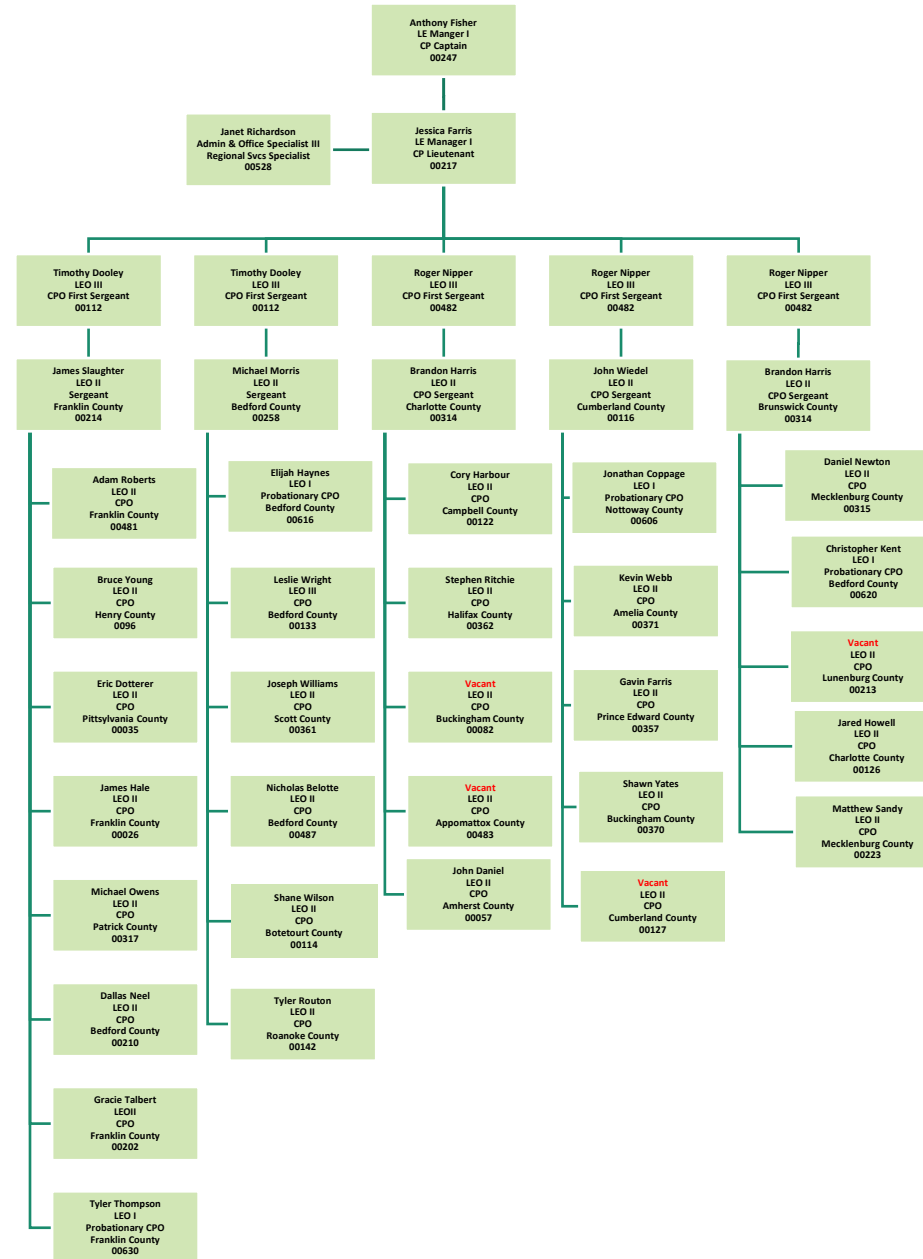
Law Enforcement Professional Standards



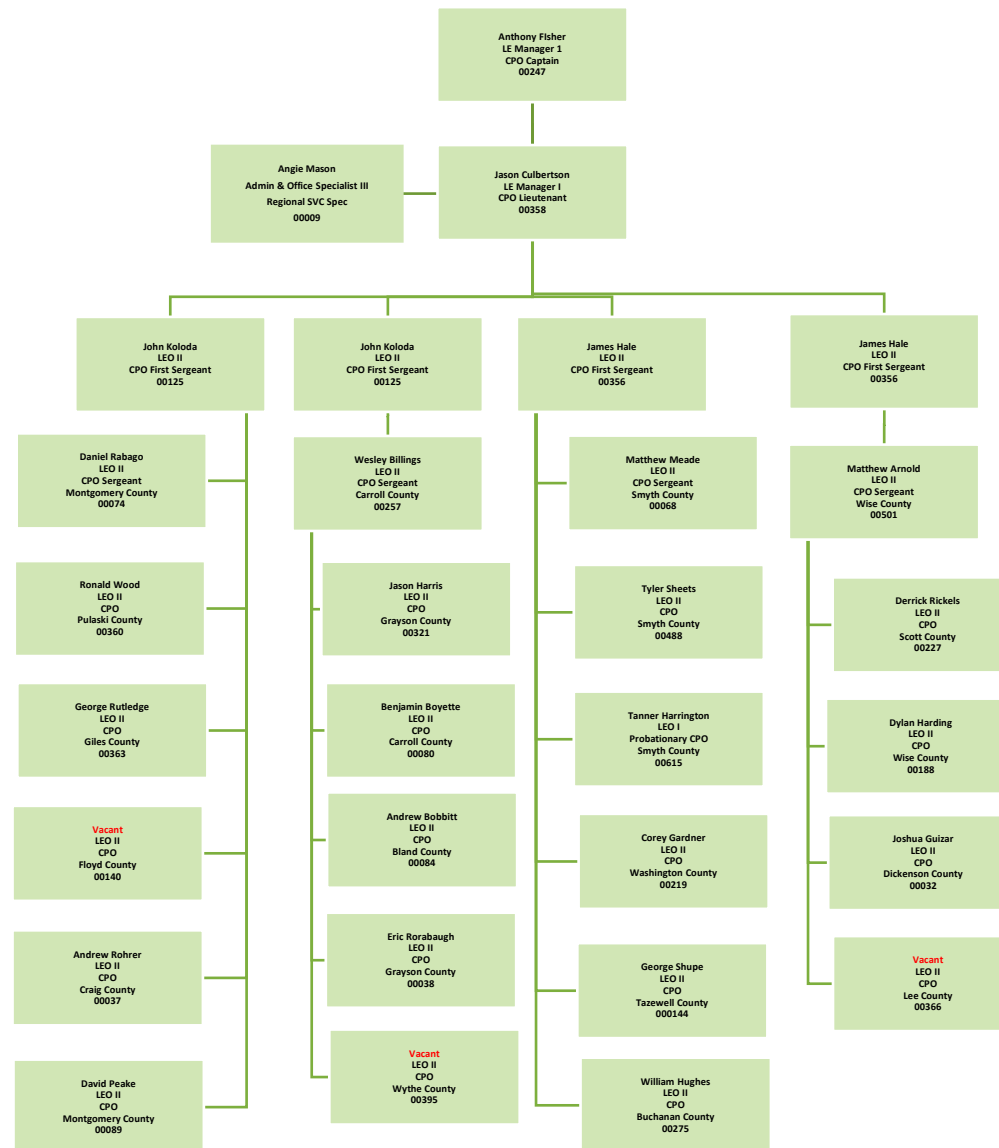
Law Enforcement Division Operations Region I



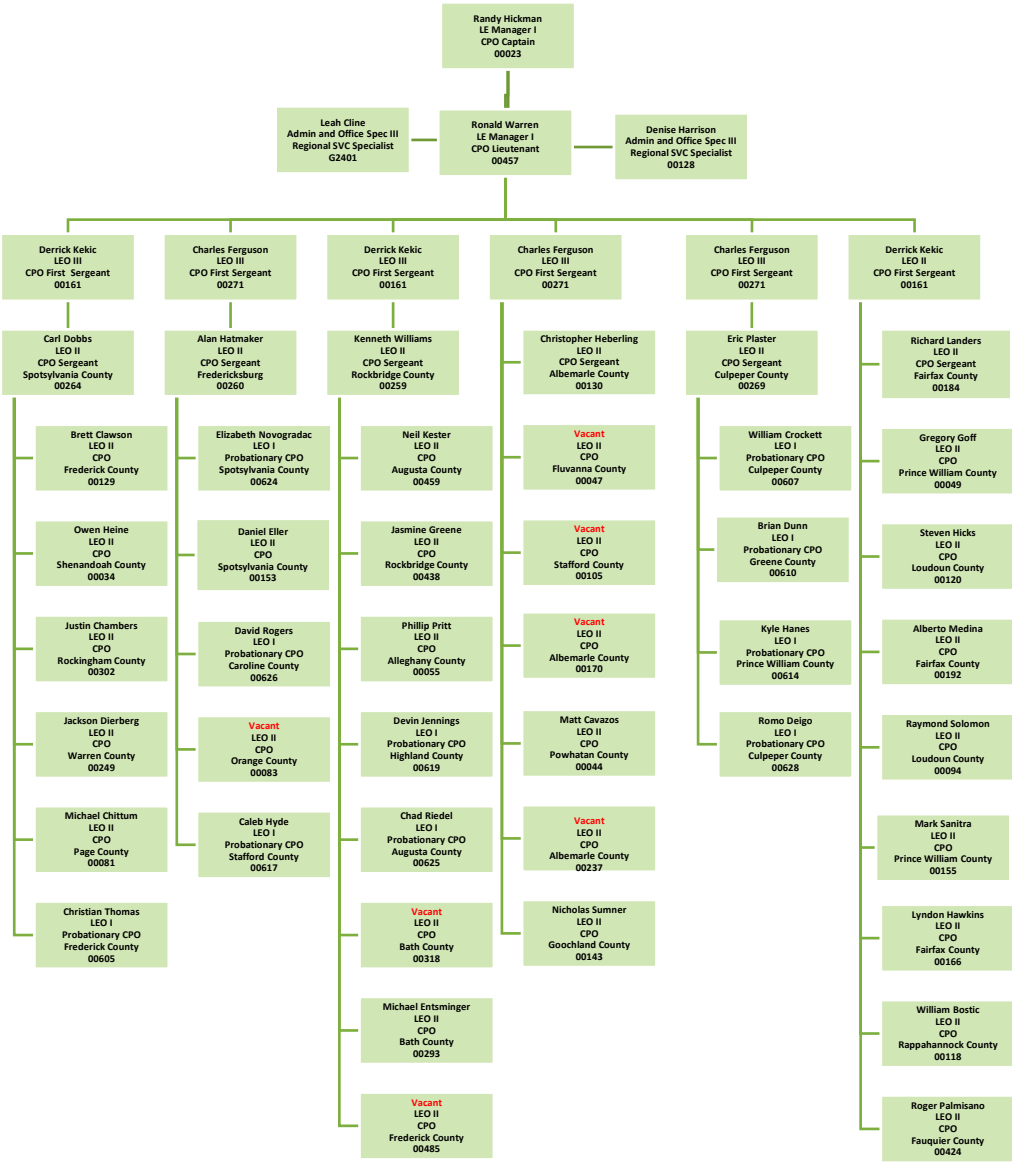
Law Enforcement Division Operations Region II



Law Enforcement Division Operations Region III

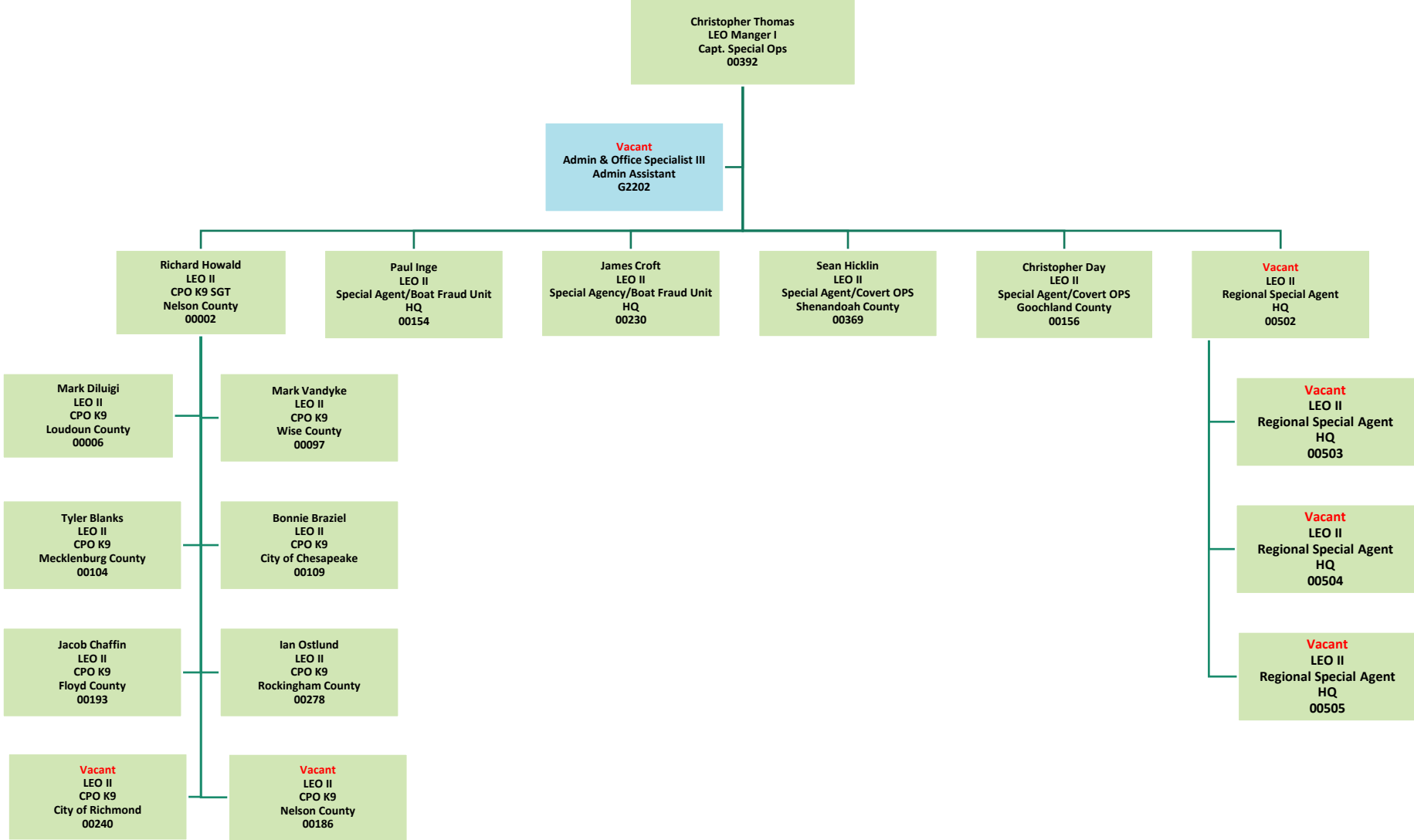


Law Enforcement Division Operations Region IV



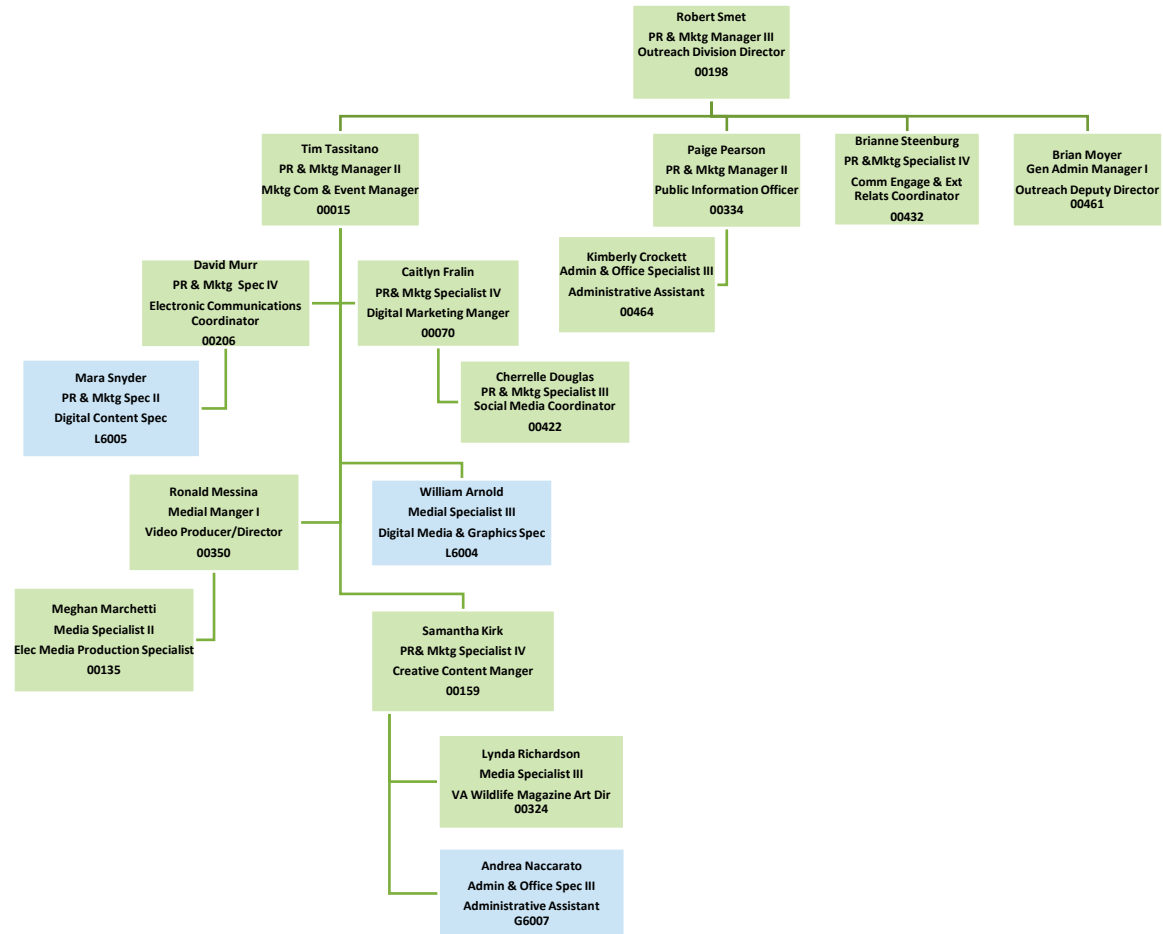
Law Enforcement - Operations

Special Operations & K9 Unit

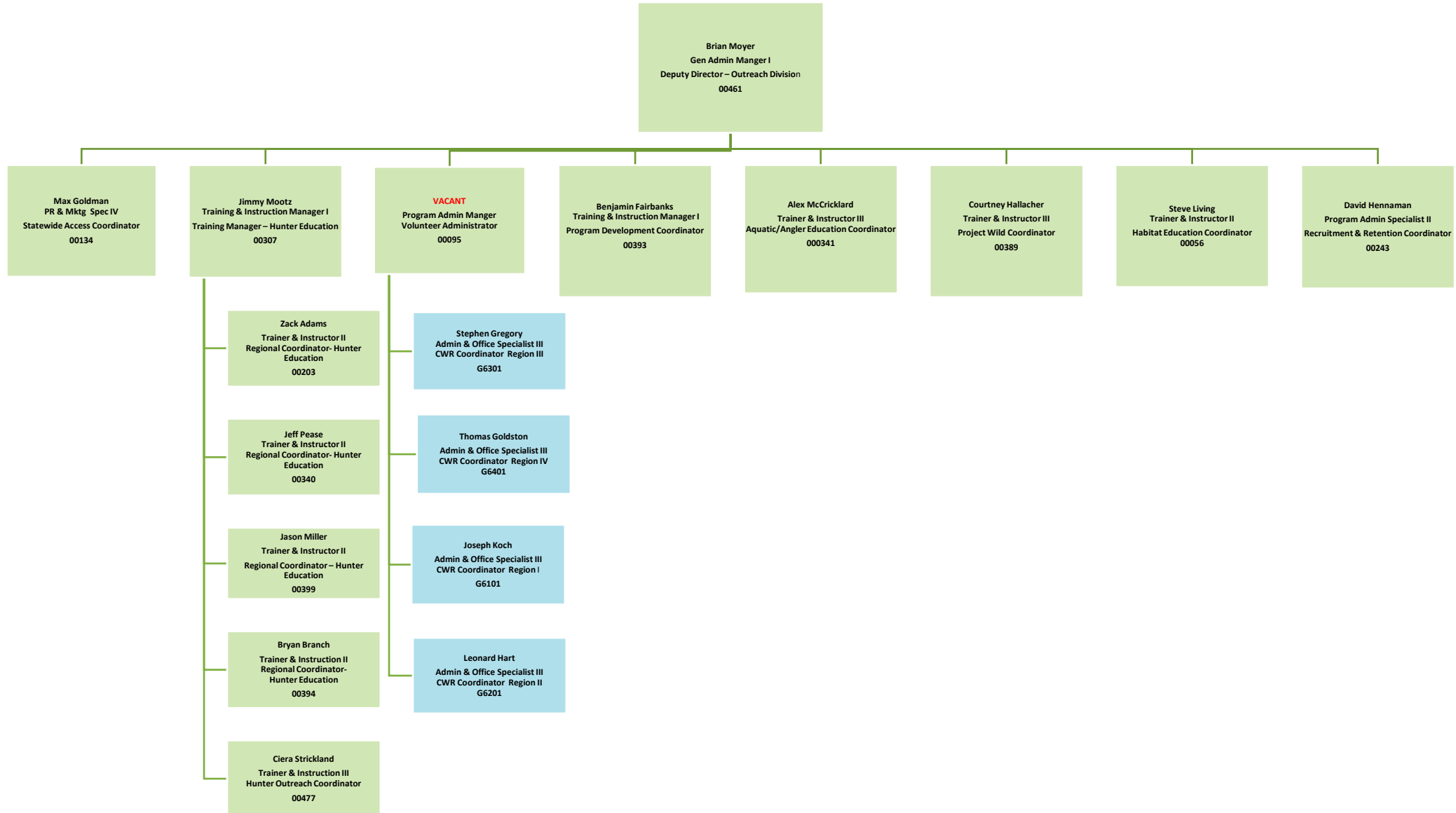


Outreach Division

Outreach Division Marketing & Public Relations Headquarters

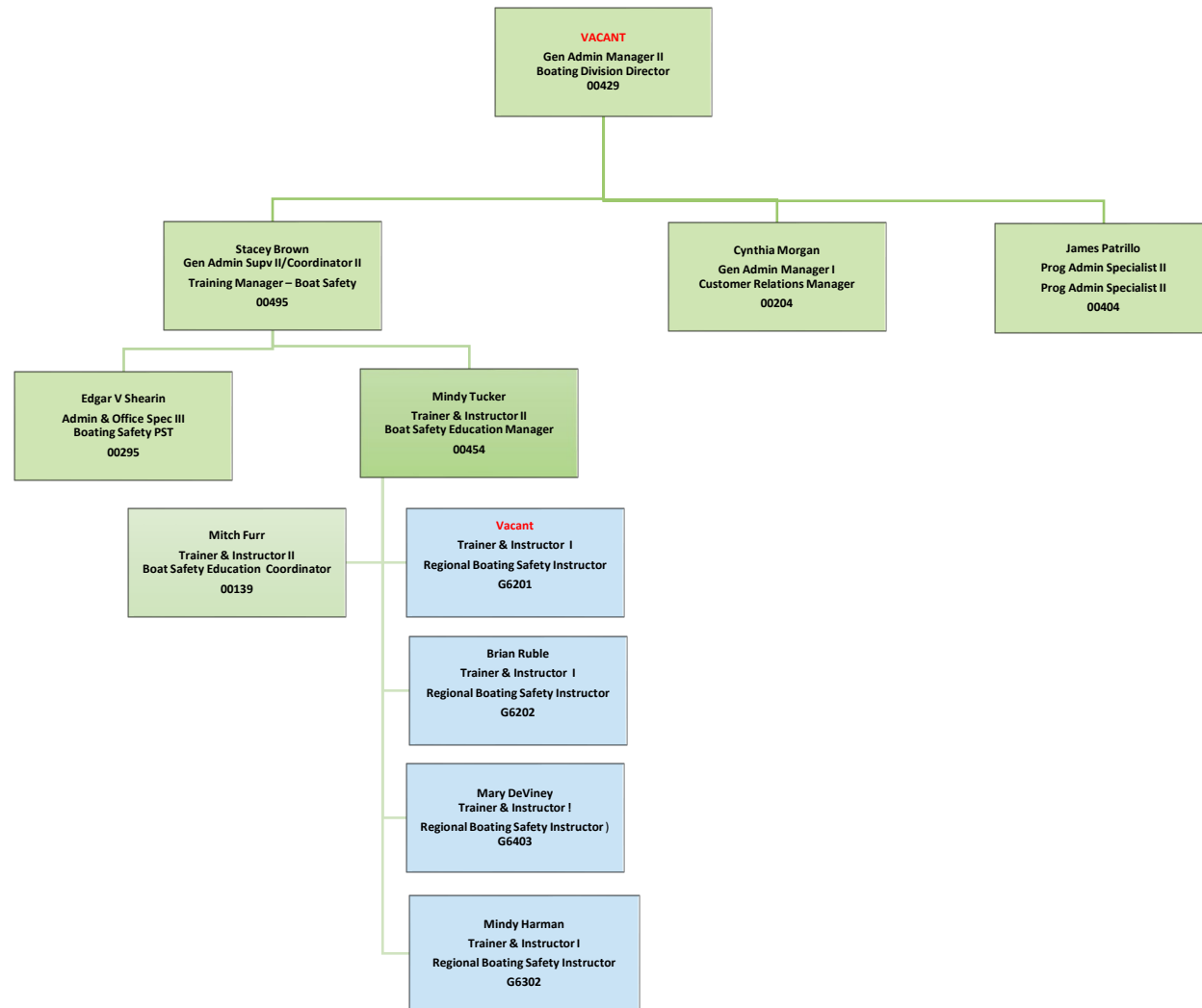


Outreach Division Recreation & Education

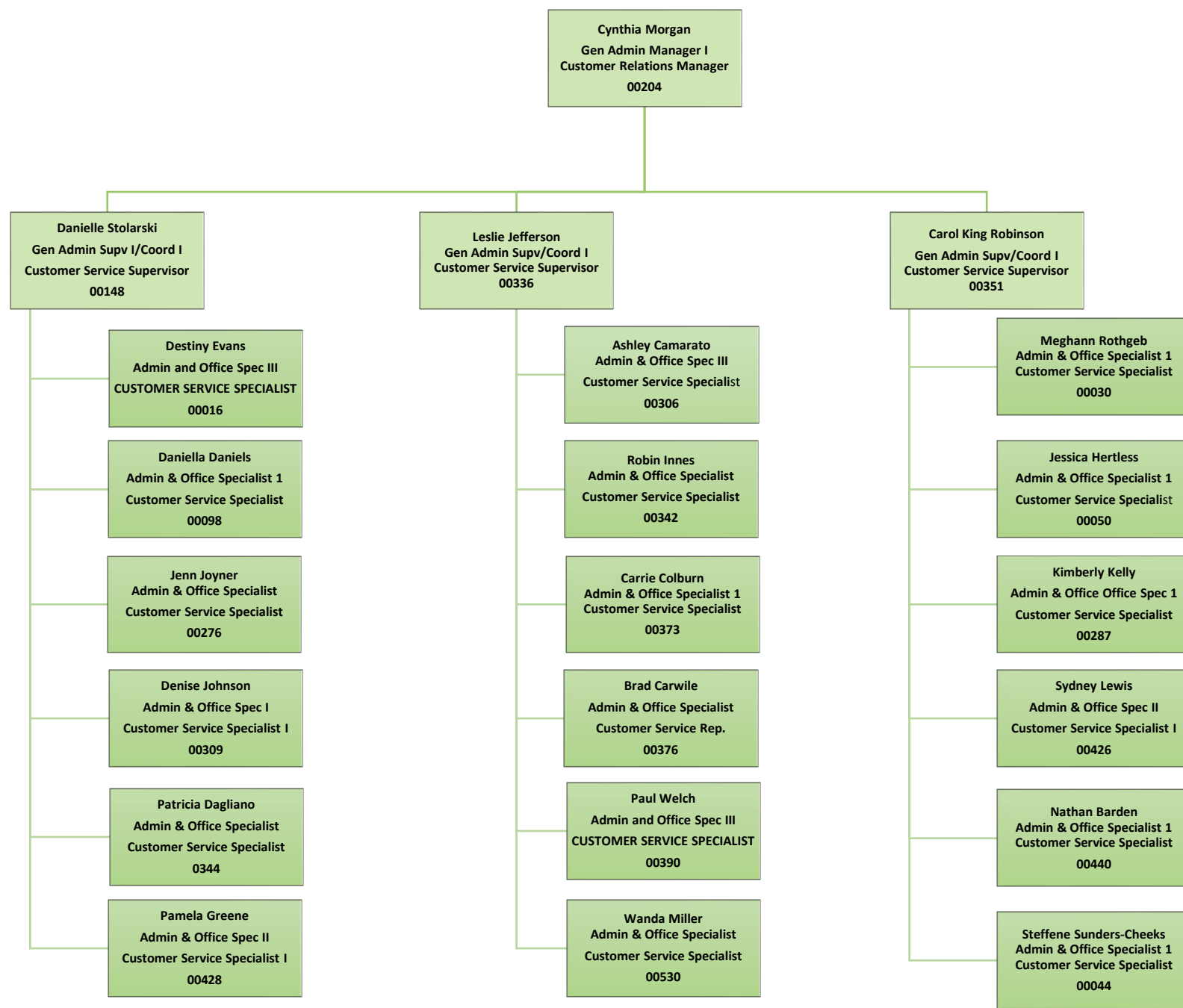


Boating Division

Boating Division

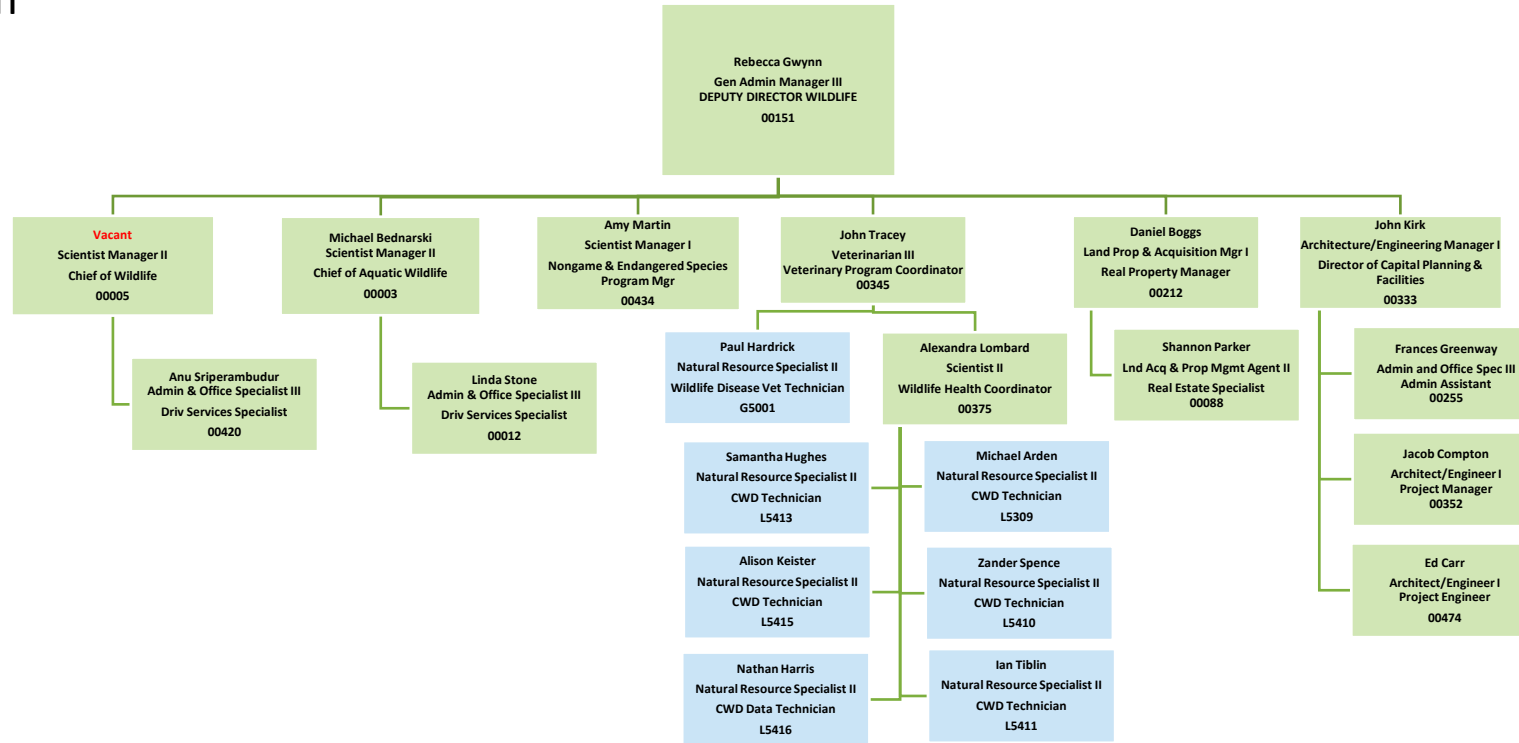


Boating Division – Customer Relations

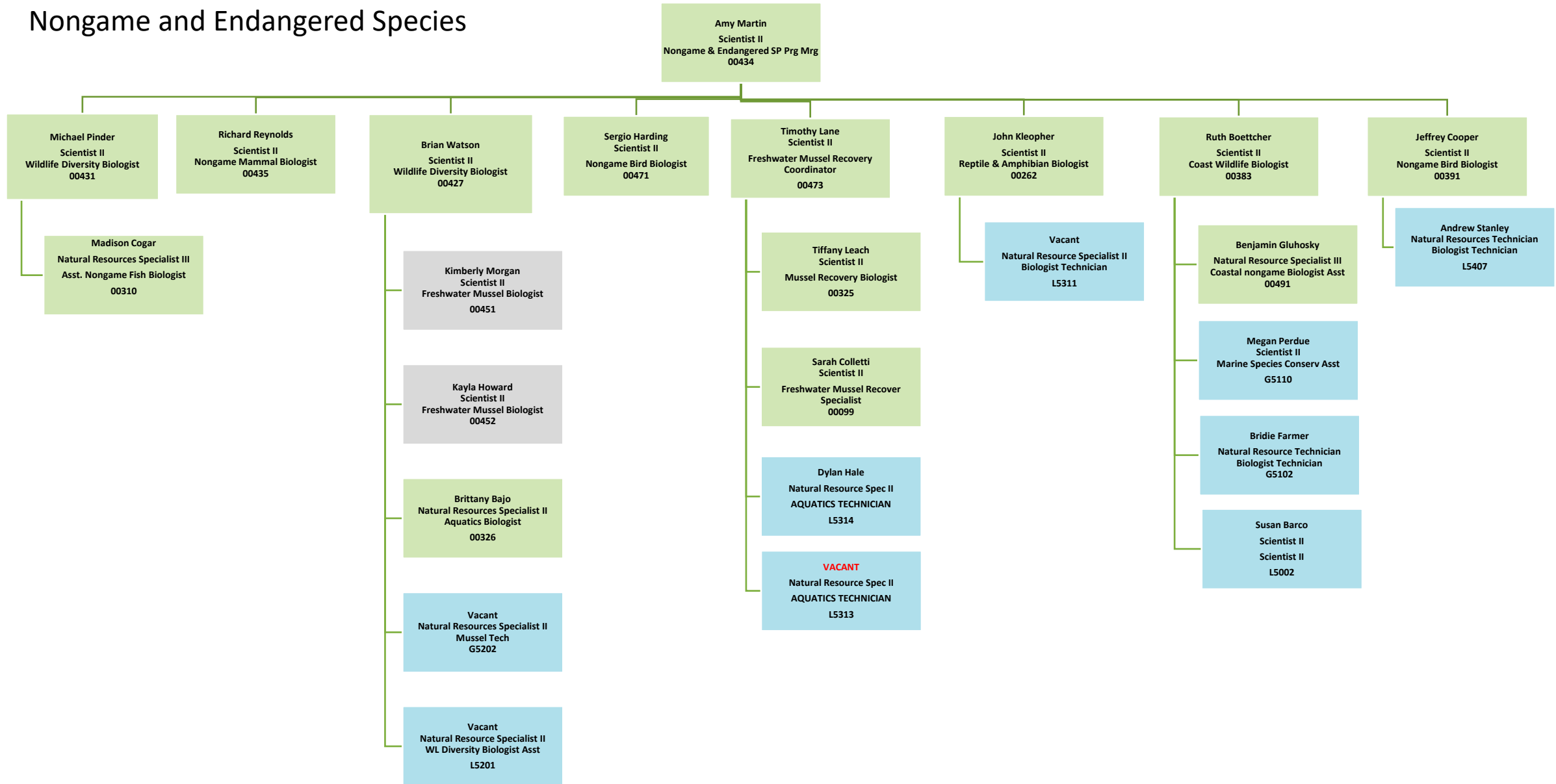


Executive Office, Wildlife, & Aquatic Divisions

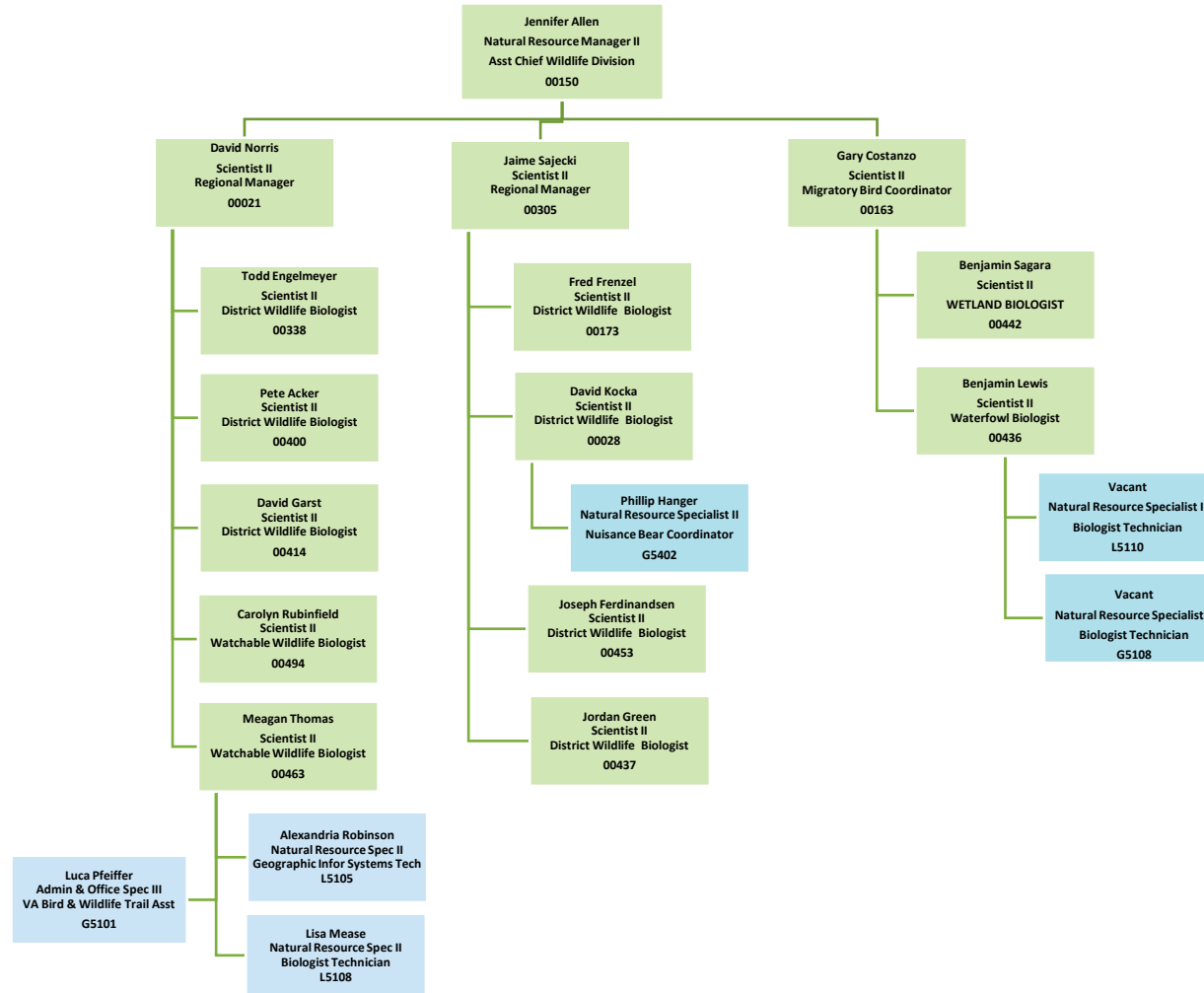
Executive Office:
 Nongame and Endangered Species
 Veterinary Program
 Capital Programs Unit
 Land Acquisition



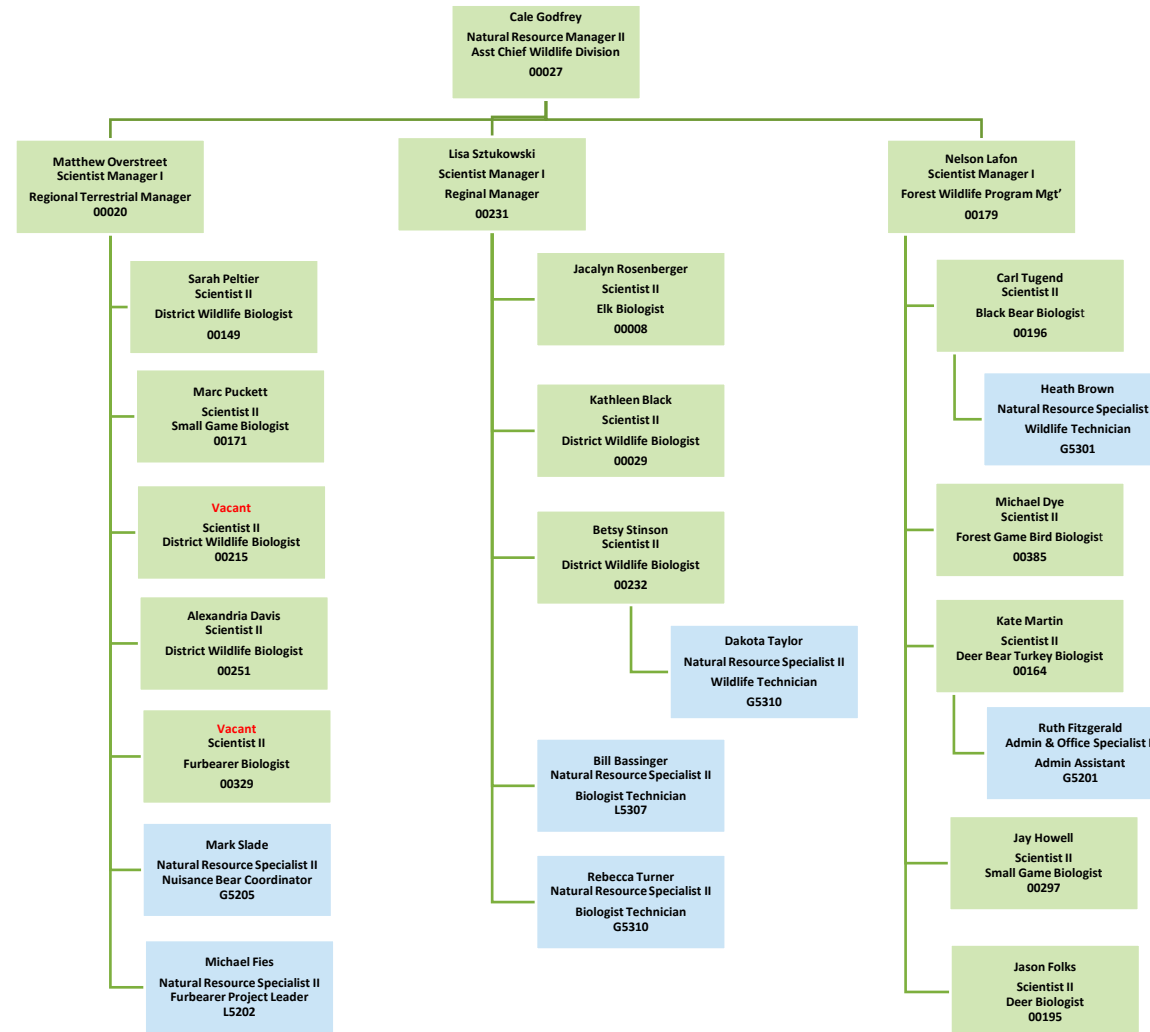
Executive Office— Nongame and Endangered Species



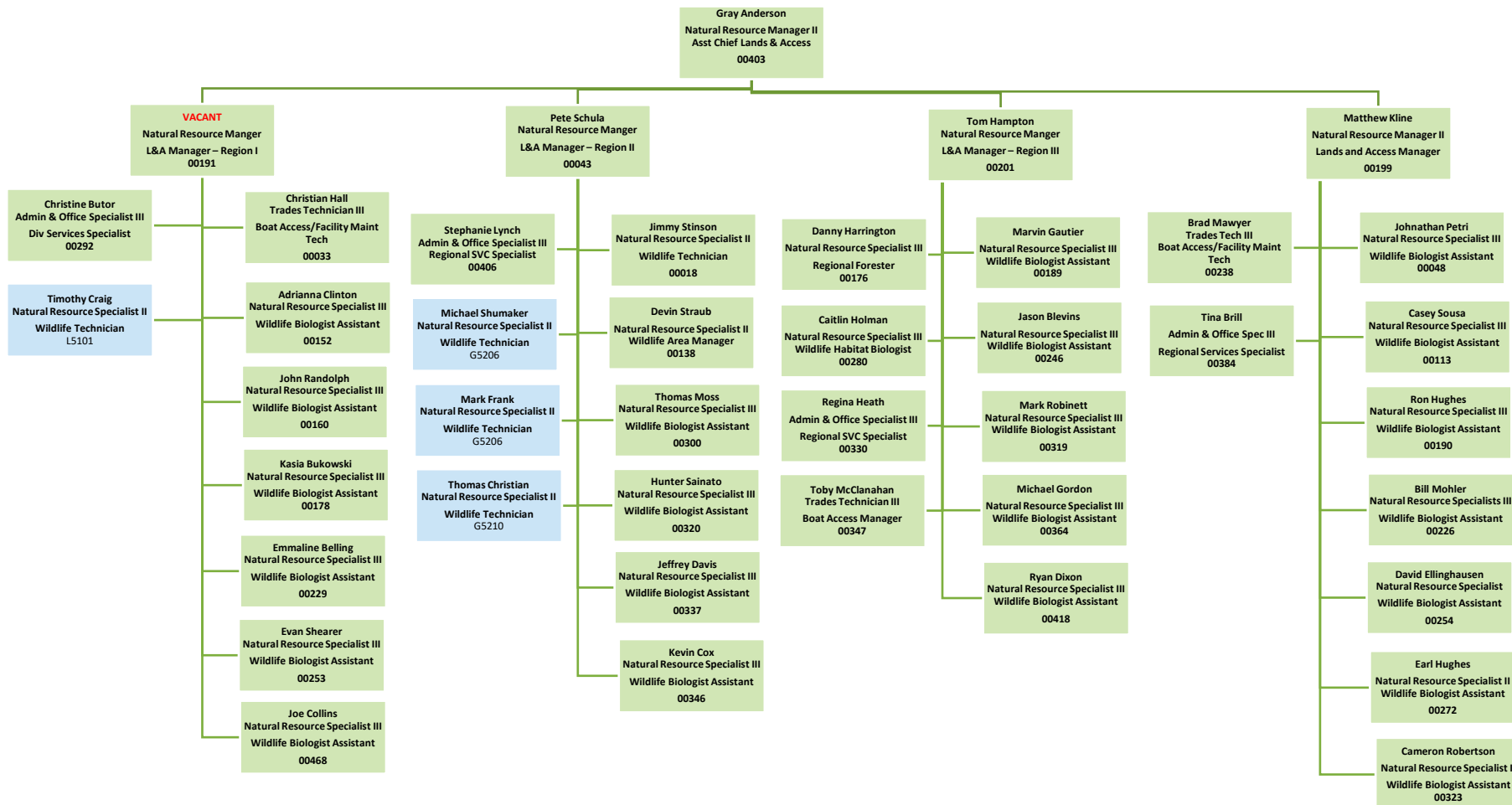
Wildlife Division - Region I & IV Programs



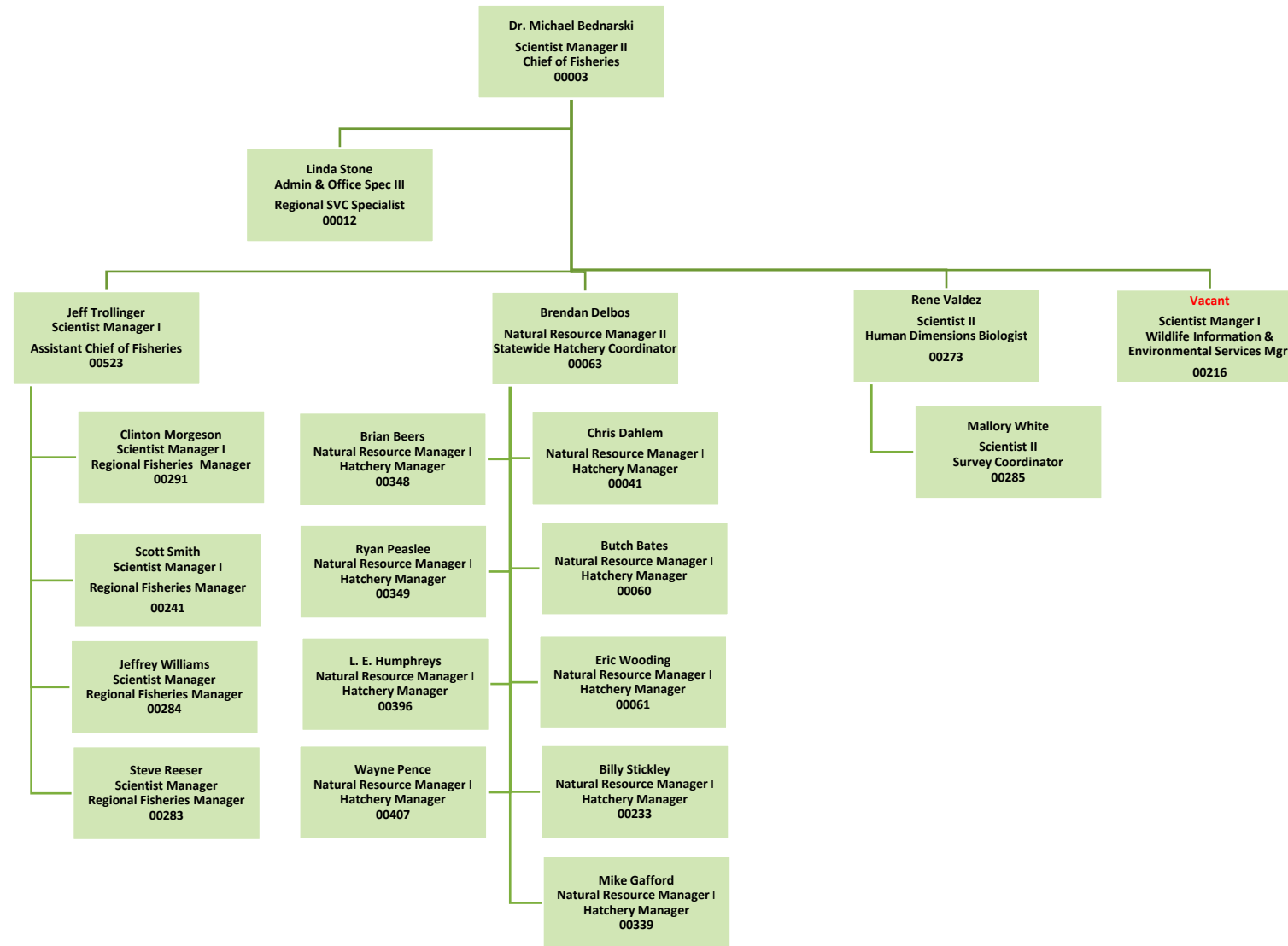
Wildlife Division - Region II & III Programs



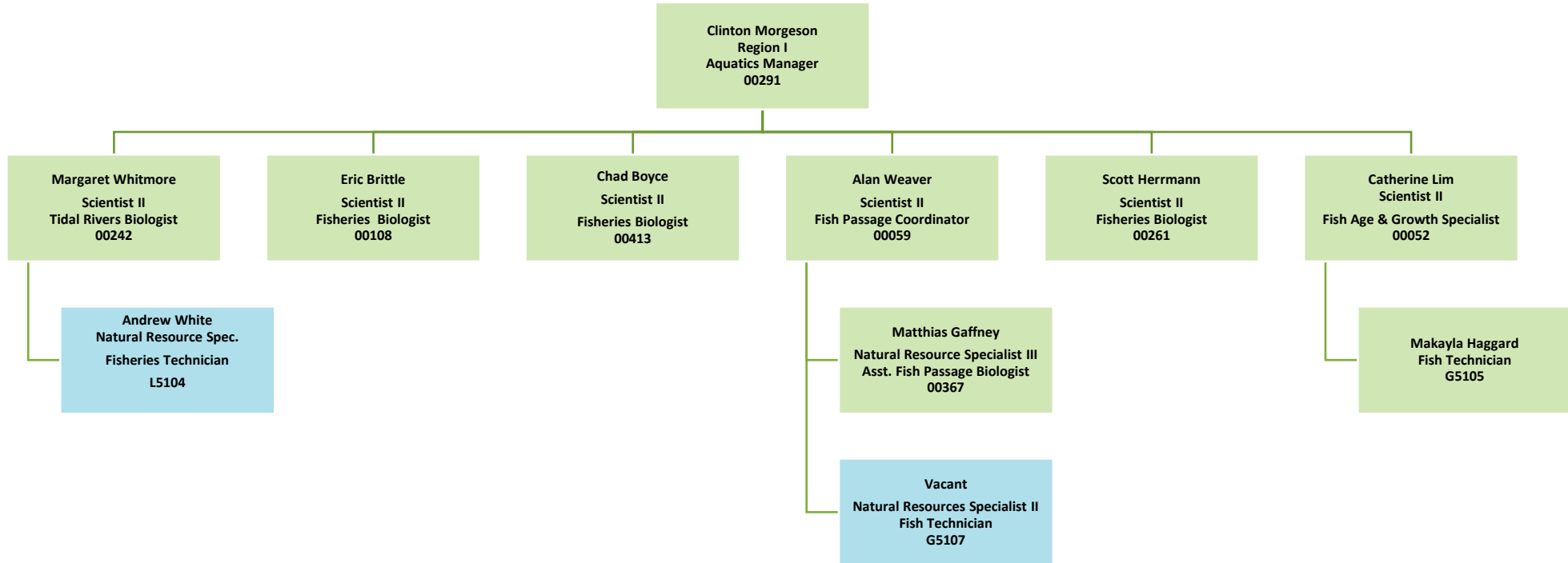
Wildlife Division - Lands and Access



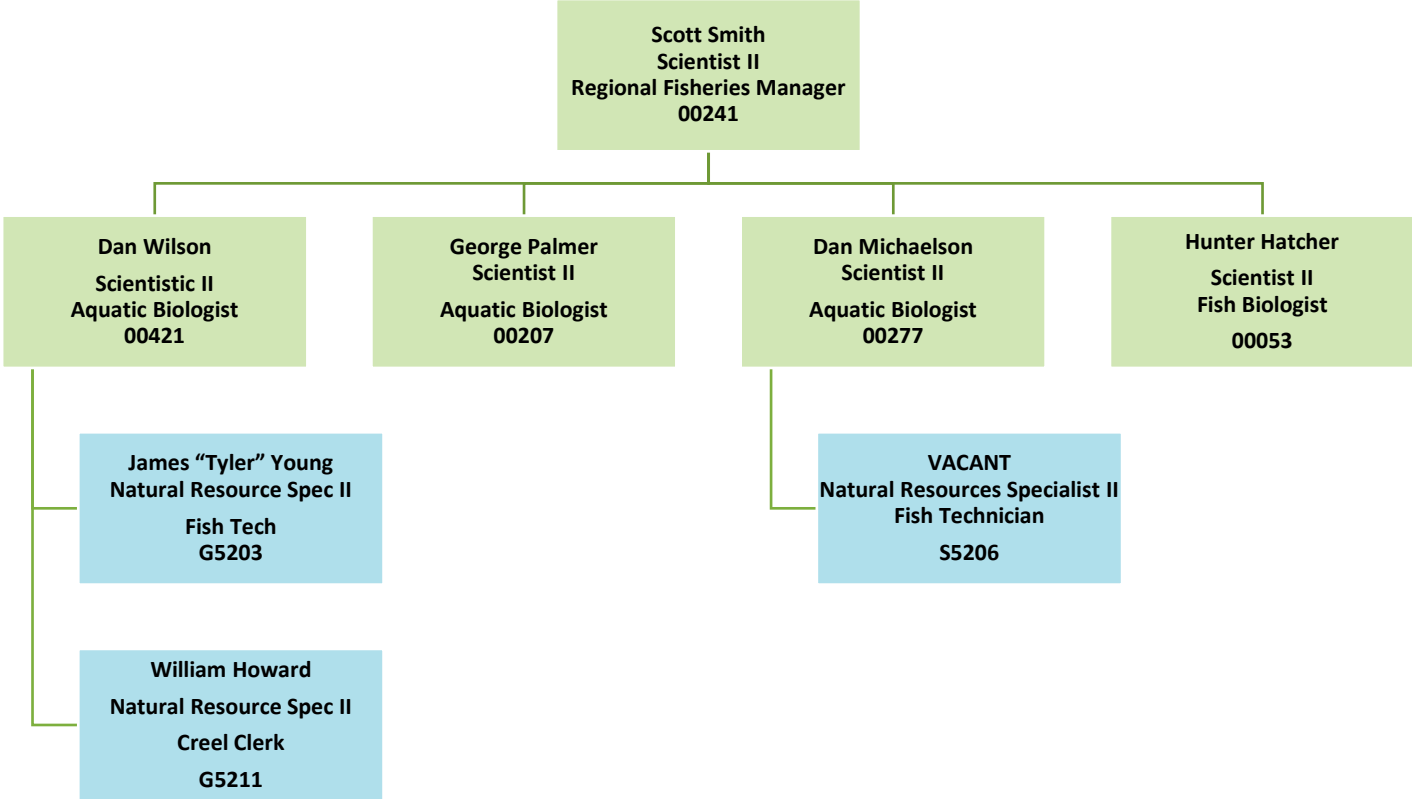
Aquatic Wildlife Division - Headquarters



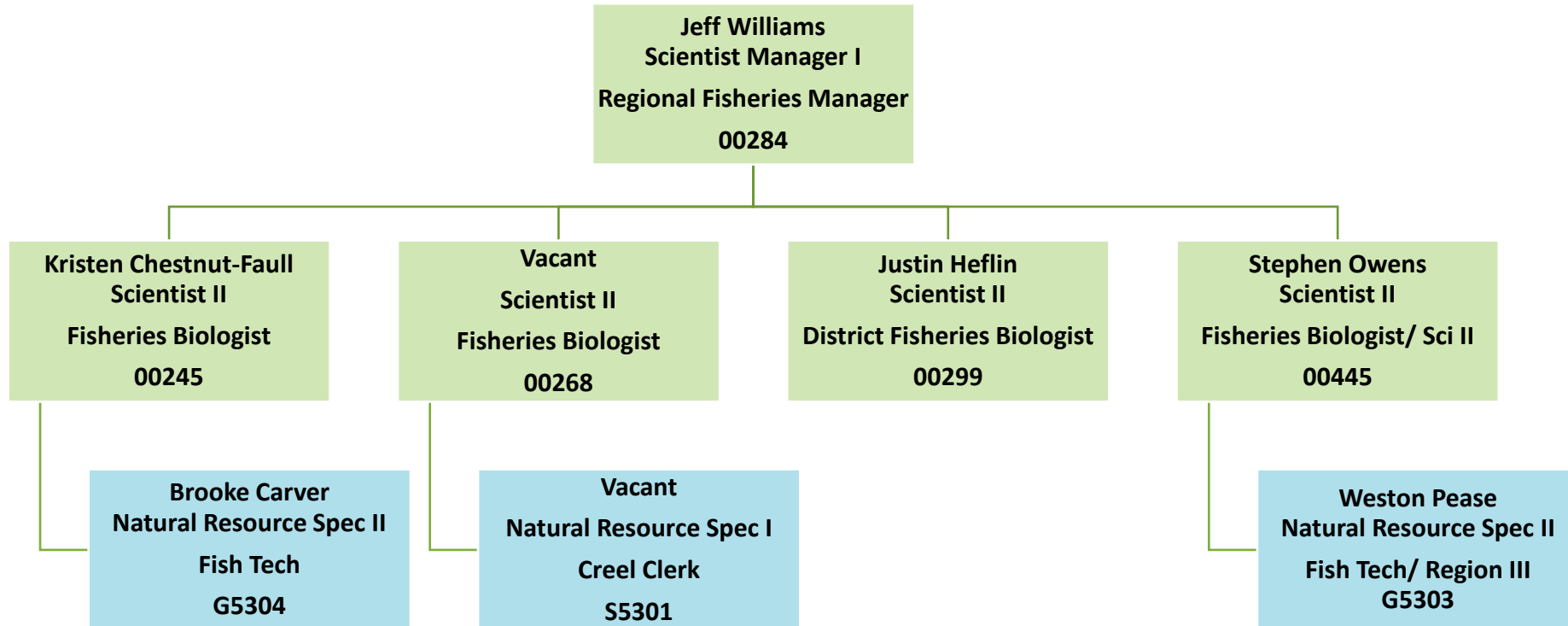
Aquatic Wildlife Division - Aquatics Region I



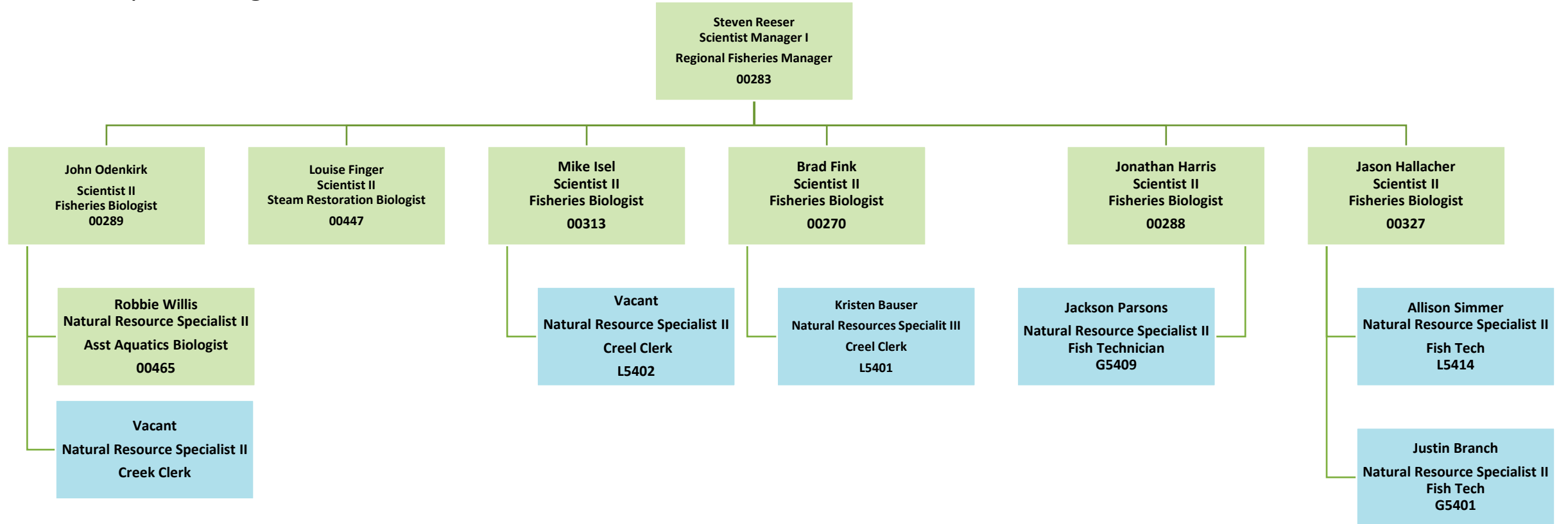
Aquatic Wildlife Division - Aquatics Region II



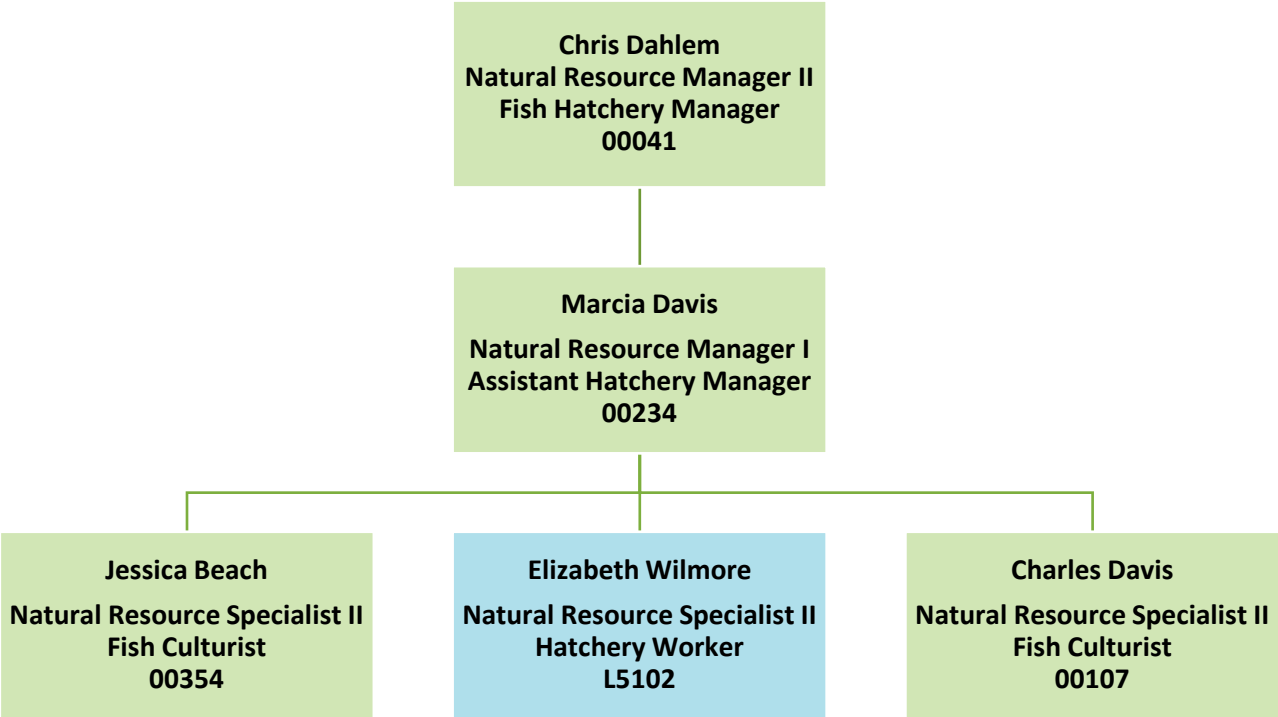
Aquatic Wildlife Division -
Aquatics Region III



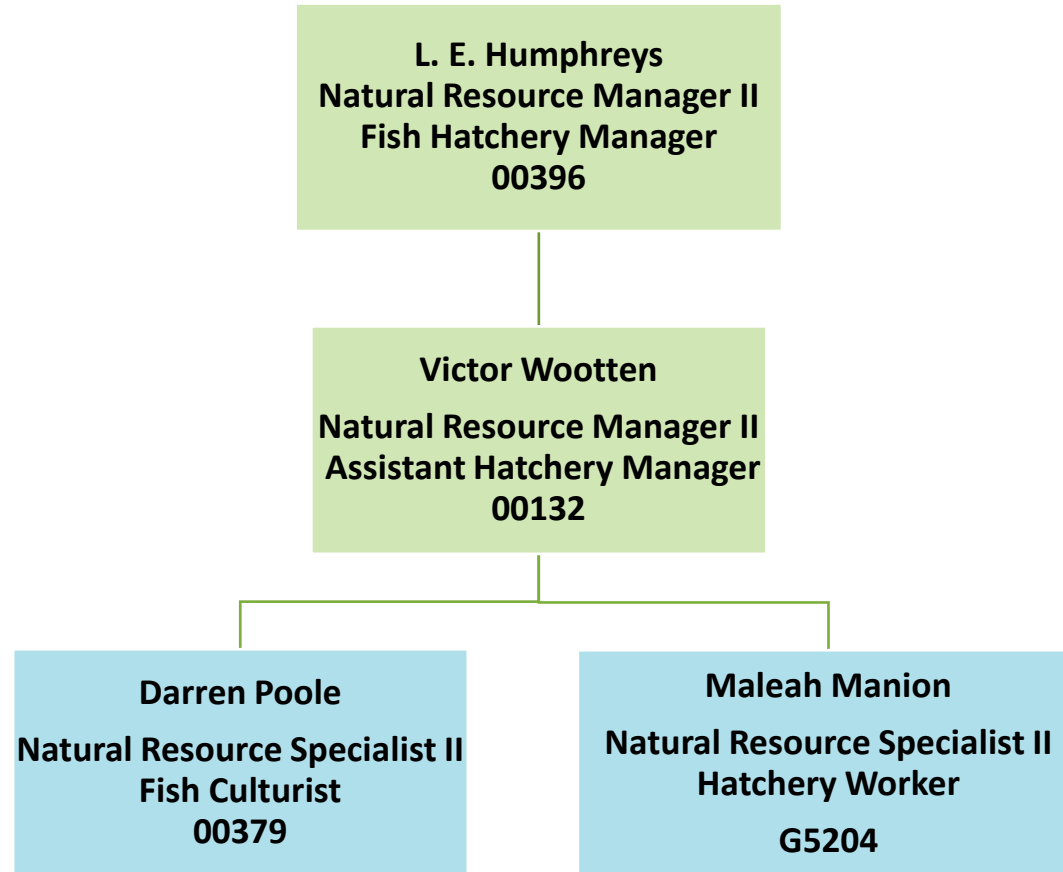
Aquatic Wildlife Division - Aquatics Region IV



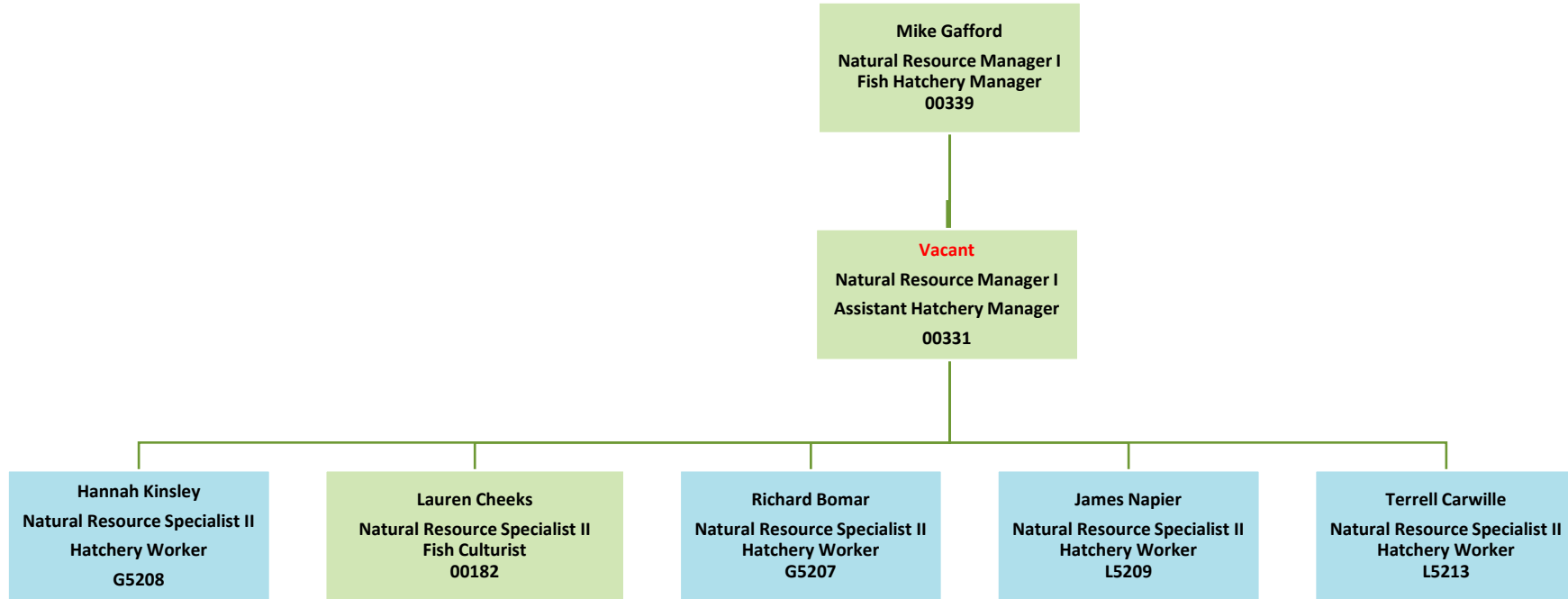
Aquatic Wildlife Division -
King & Queen Hatchery



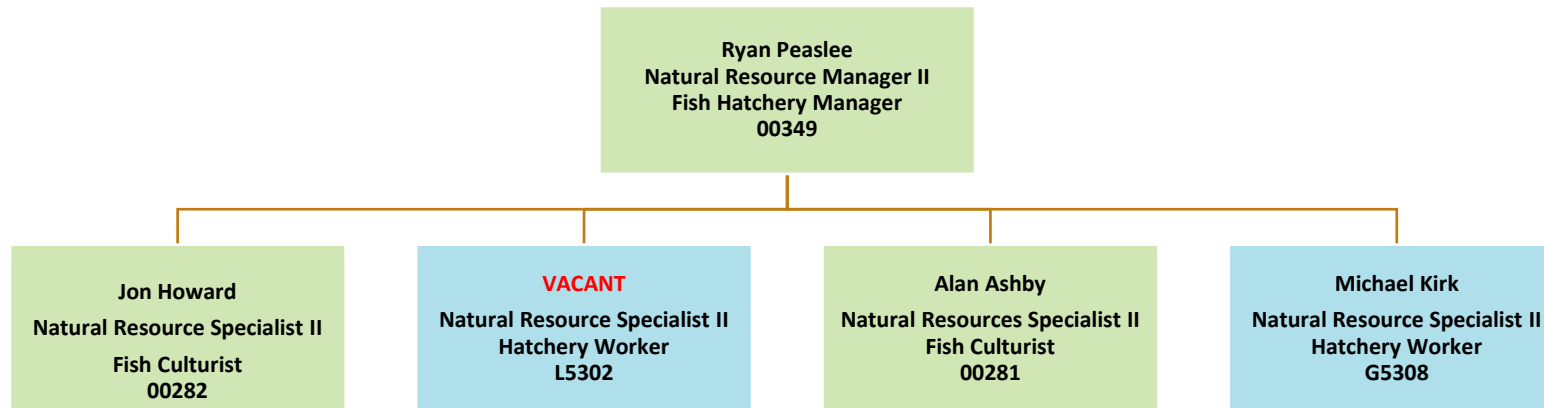
Aquatic Wildlife Division -
Montebello Hatchery



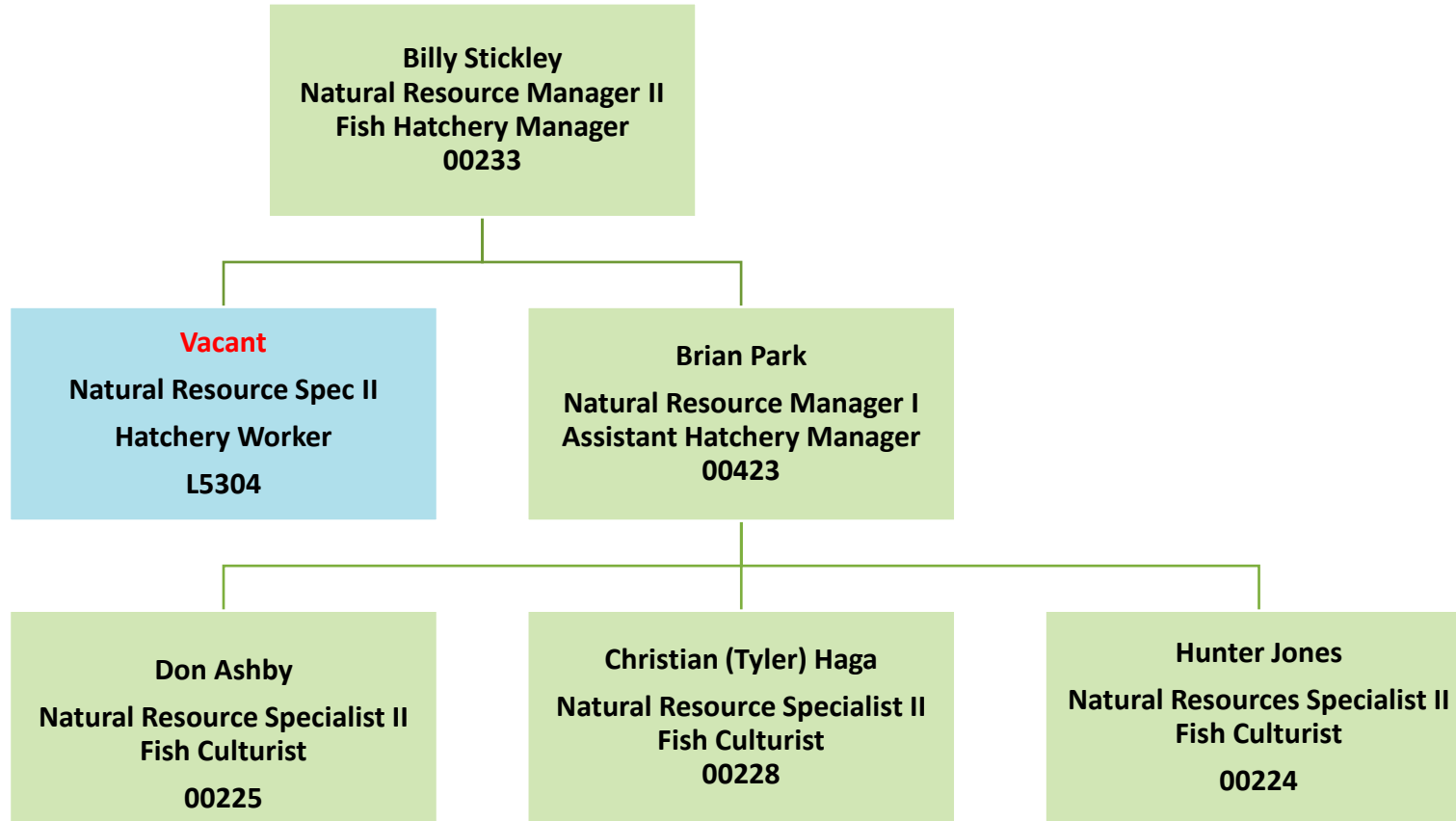
Aquatic Wildlife Division - Vic Thomas Hatchery



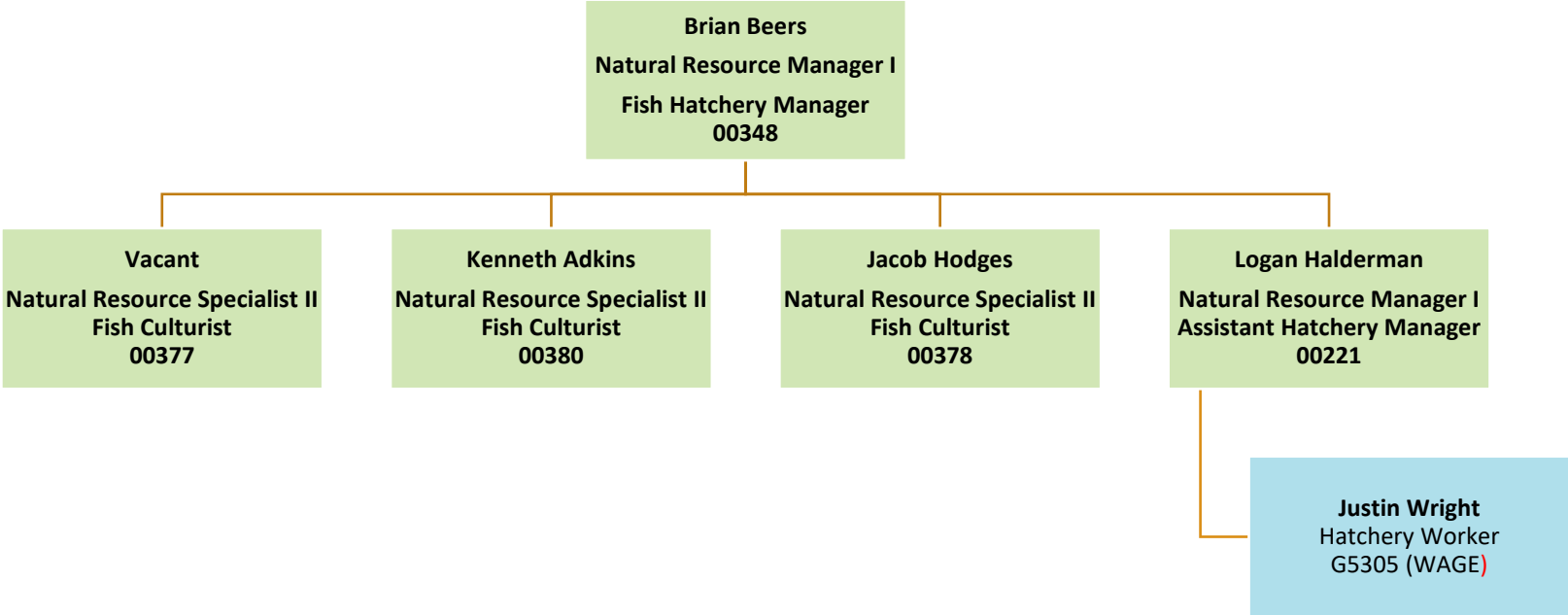
Aquatic Wildlife Division - Buller Hatchery



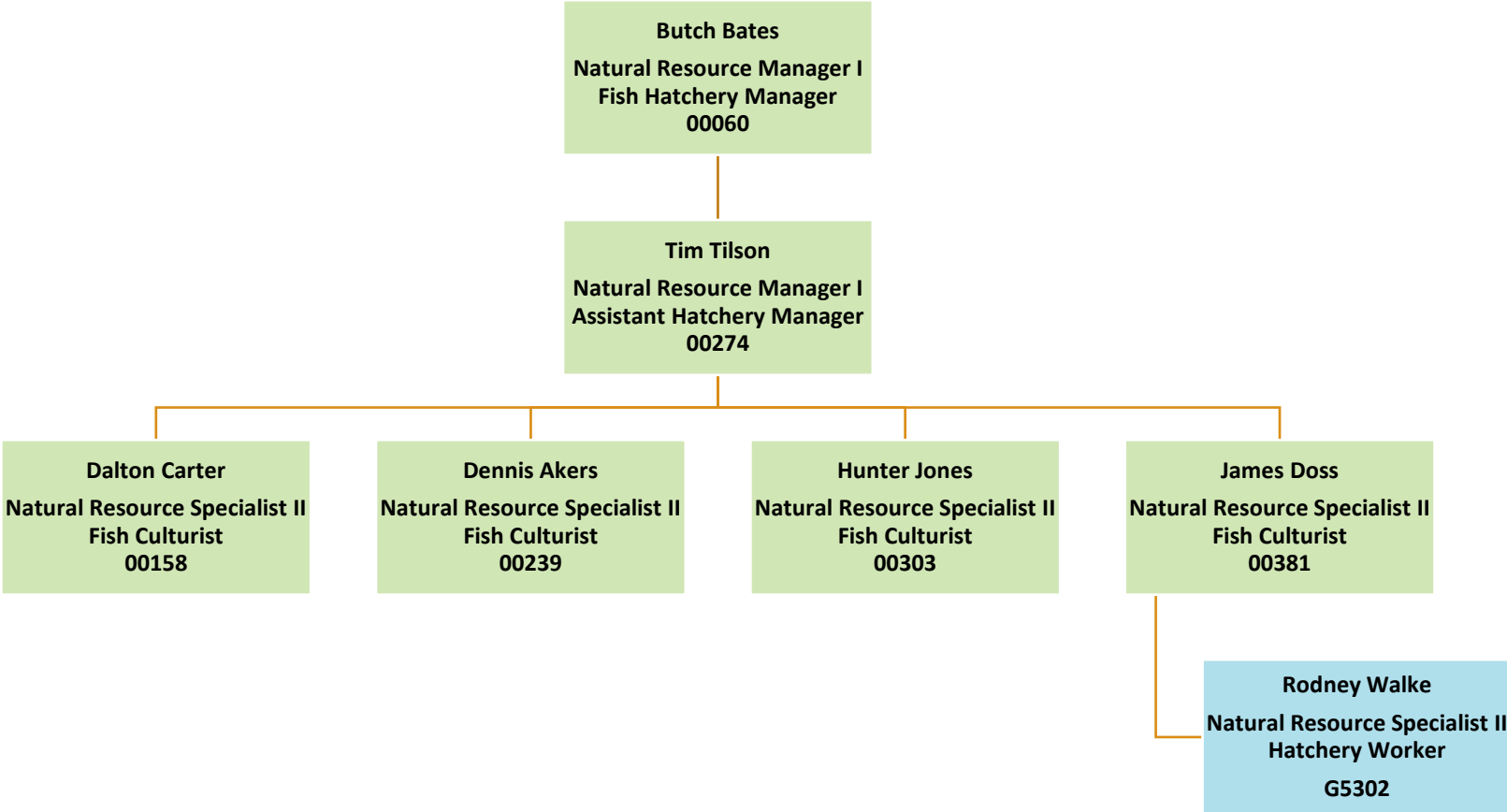
Aquatic Wildlife Division -
Marion Hatchery



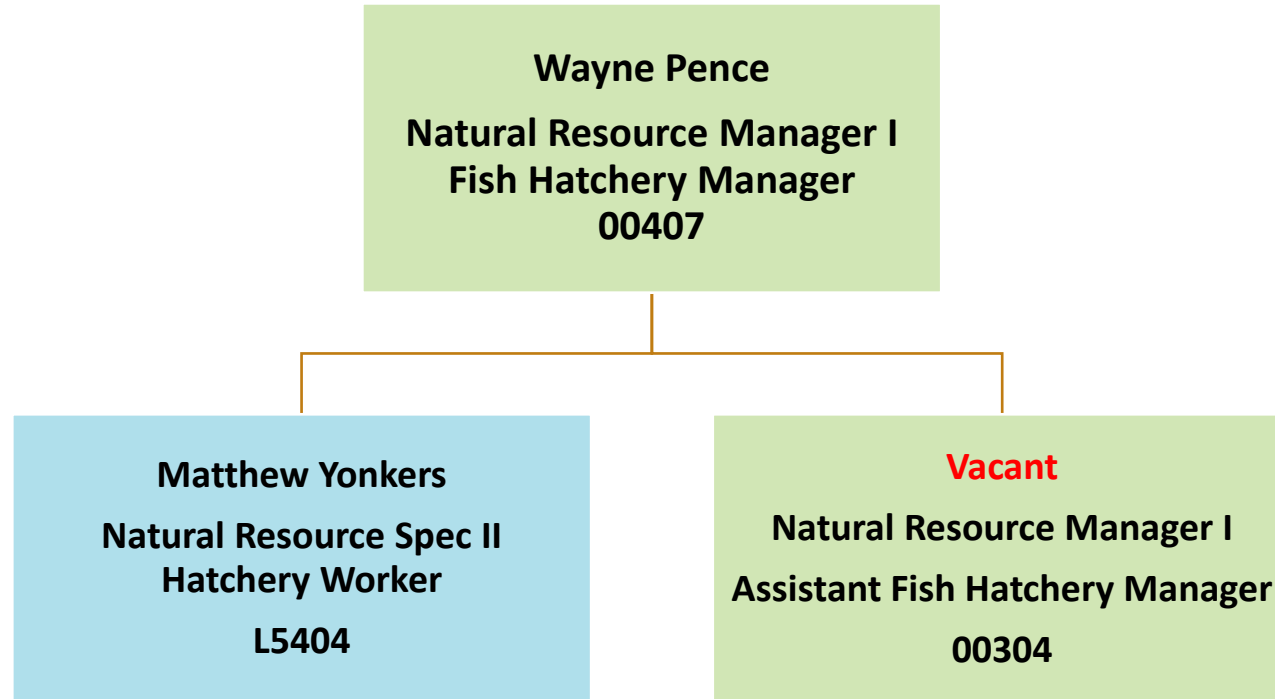
Aquatic Wildlife Division -
Paint Bank Hatchery



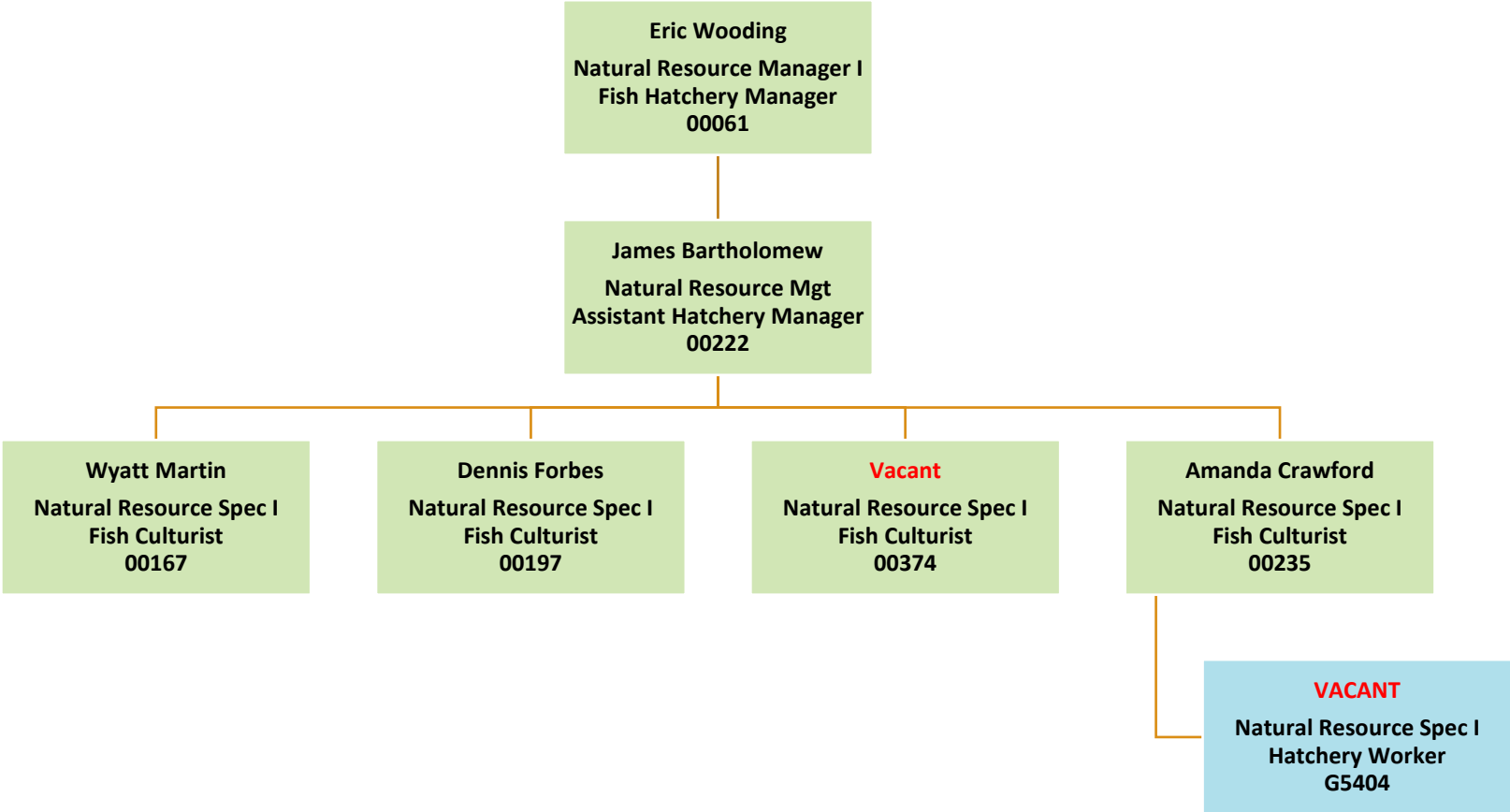
Aquatic Wildlife Division -
Wytheville Hatchery



Aquatic Wildlife Division -
Front Royal Hatchery



Aquatic Wildlife Division - Coursey Springs Hatchery



Aquatic Wildlife Division -
Environmental Services Section (ESS) and
Fish and Wildlife Information Section (FWIS)

